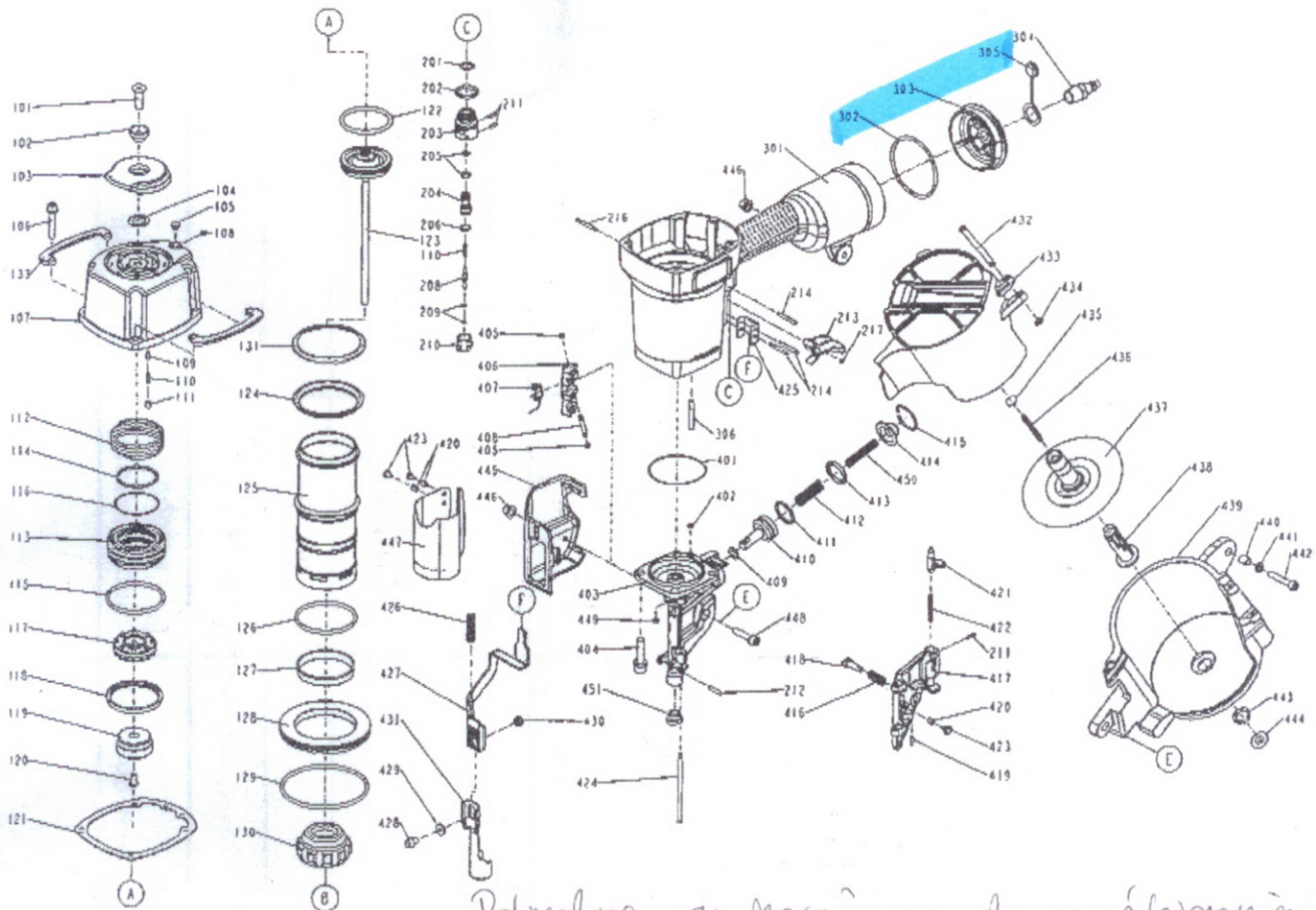


DIAGRAM OF C33/90-A3



*potrzebne cz. zamiennie do goodnessa!*

ITEM NO.	PART NO.	DESCRIPTION	ITEM NO.	PART NO.	DESCRIPTION	ITEM NO.	PART NO.	DESCRIPTION
101	2040103-05010-2	COUNTER SUNK SCREW	204	1133S-0250001-1	VALVE PLUNGER	418	11358-0794704-1	NAIL STOP
102	1136B-0374701-1	DEFLECTOR PAD	205	2041100-01070-0	O - RING	419	2040401-04060-0	SPIRAL PINS
103	11371-0374701-2	DEFLECTOR	206	2041100-01030-0	O - RING	420	1131G-0254701-1	FIXED RING
104	1135G-0374701-1	RUBBER PAD	208	11375-0084701-1	PLUNGER	421	11310-0864701-1	DOOR LATCH
105	1135S-0350001-1	GROMMET	209	2041102-01030-0	O - RING	422	11311-0974701-1	LATCH SPRING
106	2040100-04060-0	BOLT ASSY	210	11373-0084701-1	TRIGGER VALVE HEAD	423	11324-0254701-1	FIXED PIN
107	11369-0370905-1	CAP	211	2040400-05060-0	SPRING PIN	424	11362-0794704-1	DOOR SHAFT PIN
108	2040104-03010-0	HEX.SOC.HD SCREW	212	2040400-05100-0	SPRING PIN	425	11338-0374701-1	SAFETY GUIDE
109	1136C-0374701-1	POSITIONING AXIS	213	11224-0374701-2	TRIGGER UNIT	426	11337-0794701-1	SAFETY SPRING
110	11376-0254701-1	SPRING	214	2040400-05180-0	SPRING PIN	427	11332-0794701-1	SAFETY B
111	2040104-04010-0	HEX.SOC.HD SCREW	216	11318-0374701-1	TRIGGER PIVOT PIN	428	2040101-04180-0	HEX.SOX.HD BOLT
112	11360-0374701-3	COMPRESSION SPRING	217	1131D-0450001-1	URETHANE RETAINER	429	2040202-04010-0	FLAT WASHER
113	11368-0370002-3	HD.VALVE PISTON	301	11230-0798803-1	GUN BODY UNIT	430	1135K-0374701-1	SCREW FIXING SEAT
114	2041109-05070-0	O - RING	302	2041108-07010-0	O - RING	431	11331-0794705-1	SAFETY A
115	2041108-07021-0	O - RING	303	11346-0374301-1	END CAP	432	1132V-0794702-1	PIN
116	2041109-05080-0	O - RING	304	1135V-0000003-1	AIR PLUG	433	11355-0794702-1	MAGAZINE COVER
117	1136N-0370001-2	VALVE	305	1132L-0014701-1	DUSTY COVER	434	1131G-0794702-1	FIXED RING
118	11399-0370001-1	COLLAR	306	1136U-0794701-1	FILTER	435	1134M-0864701-1	SPRING BASE
119	11370-0370002-1	SEAL	401	2041104-07010-0	O - RING	436	11328-0794701-1	PULL SPRING
120	2040102-04010-0	HALF ROUND HD HEX BOLT	402	2041100-01020-0	O - RING	437	11289-0790001-1	SPACER
121	11302-0374701-3	CYLINDER CAP SEAL	403	11382-0794704-1	NOSE PIECE	438	11357-0794701-1	ADJUST POST
122	2041107-06010-0	O-RING	404	2040100-05010-2	BOLT ASSY	439	11354-0794702-2	MAGAZINE CASE
123	11204-0790006-1	DRIVER UNIT	405	1135H-0790001-1	PU RETAINER	440	11398-0254702-1	LATCH SPRING BUSHING
124	1135J-0370001-2	PRESS RING	406	11306-0794701-3	FEED FINGER	441	2040201-04020-0	FLAT WASHER
125	11320-0370003-1	CYLINDER	407	11307-0790001-1	FEED FINGER SPRING	442	2040101-04120-0	HEX.SOC.HD BOLT
126	2041101-08010-0	O - RING	408	11365-0794701-1	PIN FEED PISTON	443	2040301-11010-0	S - RING
127	11322-0370002-1	CYLINDER RING	409	2041100-01090-0	O - RING	444	1134M-0250002-1	SPRING BASE
128	11321-0370001-1	CYLINDER SPACER	410	11364-0794701-1	FEED PISTON	445	1134C-0794701-1	SAFETY COVER
129	2041101-09010-0	O - RING	411	2041104-03020-0	O - RING	446	2040501-04010-0	BOLT CAP
130	11327-0370001-4	BUMPER	412	1133F-0794701-1	FEED PISTON SPRING	447	11383-0790001-1	MUZZLE PROTECTOR
131	1136D-0374701-1	PRESS RING	413	1134W-0790001-1	FEED BUMPER	448	2040100-04030-0	BOLT ASSY
133	11397-0794701-1	GUIDE COVER	414	11366-0794701-1	FEED PISTON CAP	449	1135H-0850001-1	PU RETAINER
201	2041104-02020-0	O - RING	415	2040300-04010-0	C - RING	450	11337-1014701-1	SAFETY SPRING
202	2041104-02030-0	O - RING	416	1133C-0790001-2	STOPPER FINGER SPRING	451	11388-1030002-1	WEAR BUSHING
203	11374-0084701-1	PLUNGER CAP	417	11361-0794706-1	DOOR			