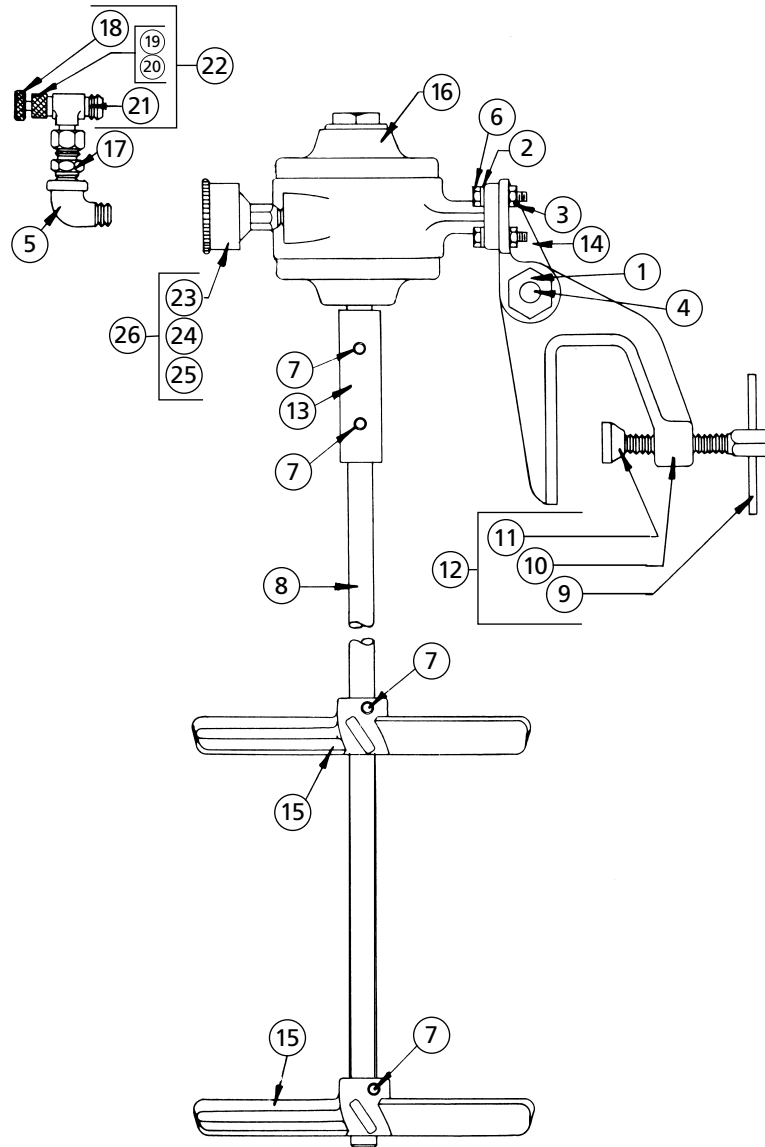


# Binks Model 31-120 HEAVY DUTY AGITATOR



## PARTS LIST

When ordering, please specify Part No.

ITEM NO.	PART NO.	DESCRIPTION	QTY.	ITEM NO.	PART NO.	DESCRIPTION	QTY.
1	20-221	HEX NUT, 1/2-13 .....	1	13	31-19	SLEEVE .....	1
2	20-263	FLAT WASHER, 1/4 .....	4	14	31-81	BASE .....	1
3	20-301	HEX NUT, 1/4-20 .....	4	15	31-82	PROPELLER .....	2
4	20-336	SQ. HD. MACH. BOLT .....	1	16	37-384	AIR MOTOR ASSEMBLY .....	1
		1/2-13 x 2" LONG		17	57-13	D.M. NIPPLE .....	1
5	20-369	STREET ELBOW, 1/4 NPT .....	1	18	73-8	VALVE .....	1
6	20-826	HEX CAP SCREW, 1/4-20 x 1" LONG ....	4	19	73-9	PACKING .....	1
7	20-1076	SOC. HD. SET SCREW .....	4	20	73-10	NUT .....	1
		5/16-18 x 5/16" LONG		21	73-13	BODY .....	1
8	31-7	PROPELLER SHAFT .....	1	22	73-59	AIR ADJUSTING VALVE .....	1
9	31-15	CLAMP SCREW .....	1	23	83-1524	SCREEN .....	1
10	31-16	CLAMP .....	1	24	83-1525	FILTER .....	1
11	31-17	BUTTON .....	1	25	83-1526	CUP .....	1
12	31-18	CLAMP ASSEMBLY .....	1	26	83-1527	MUFFLER ASSEMBLY .....	1

In this part sheet, the words **WARNING**, **CAUTION** and **NOTE** are used to emphasize important safety information as follows:

**⚠ WARNING**  
 Hazards or unsafe practices which could result in severe personal injury, death or substantial property damage.

**⚠ CAUTION**  
 Hazards or unsafe practices which could result in minor personal injury, product or property damage.

**NOTE**  
 Important installation, operation or maintenance information.

**⚠ WARNING**

Read the following warnings before using this equipment.



**READ THE MANUAL**  
 Before operating finishing equipment, read and understand all safety, operation and maintenance information provided in the operation manual.



**WEAR SAFETY GLASSES**  
 Failure to wear safety glasses with side shields could result in serious eye injury or blindness.



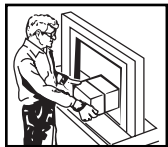
**DE-ENERGIZE, DEPRESSURIZE, DISCONNECT AND LOCK OUT ALL POWER SOURCES DURING MAINTENANCE**  
 Failure to De-energize, disconnect and lock out all power supplies before performing equipment maintenance could cause serious injury or death.



**OPERATOR TRAINING**  
 All personnel must be trained before operating finishing equipment.



**EQUIPMENT MISUSE HAZARD**  
 Equipment misuse can cause the equipment to rupture, malfunction, or start unexpectedly and result in serious injury.



**KEEP EQUIPMENT GUARDS IN PLACE**  
 Do not operate the equipment if the safety devices have been removed.



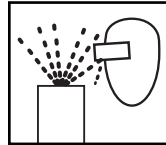
**HIGH PRESSURE CONSIDERATION**  
 High pressure can cause serious injury. Relieve all pressure before servicing. Spray from the spray gun, hose leaks, or ruptured components can inject fluid into your body and cause extremely serious injury.



**PRESSURE RELIEF PROCEDURE**  
 Always follow the pressure relief procedure in the equipment instruction manual.



**ELECTRIC SHOCK/GROUNDING**  
 Improper grounding or sparks can cause a hazardous condition and result in fire, explosion or electric shock and other serious injury.



**PROJECTILE HAZARD**  
 You may be injured by venting liquids or gases that are released under pressure, or flying debris.



**INSPECT THE EQUIPMENT DAILY**  
 Inspect the equipment for worn or broken parts on a daily basis. Do not operate the equipment if you are uncertain about its condition.



**NEVER MODIFY THE EQUIPMENT**  
 Do not modify the equipment unless the manufacturer provides written approval.



**FIRE AND EXPLOSION HAZARD**  
 Improper equipment grounding, poor ventilation, open flame or sparks can cause hazardous conditions and result in fire or explosion and serious injury.



**KNOW WHERE AND HOW TO SHUT OFF THE EQUIPMENT IN CASE OF AN EMERGENCY**



**STATIC CHARGE**  
 Fluid may develop a static charge that must be dissipated through proper grounding of the equipment, objects to be sprayed and all other electrically conductive objects in the dispensing area. Improper grounding or sparks can cause a hazardous condition and result in fire, explosion or electric shock and other serious injury.

**FOR FURTHER SAFETY INFORMATION REGARDING BINKS AND DEVILBISS EQUIPMENT, SEE THE GENERAL EQUIPMENT SAFETY BOOKLET (77-5300).**

## Binks MODEL 37-384 AIR MOTOR

### SPEED

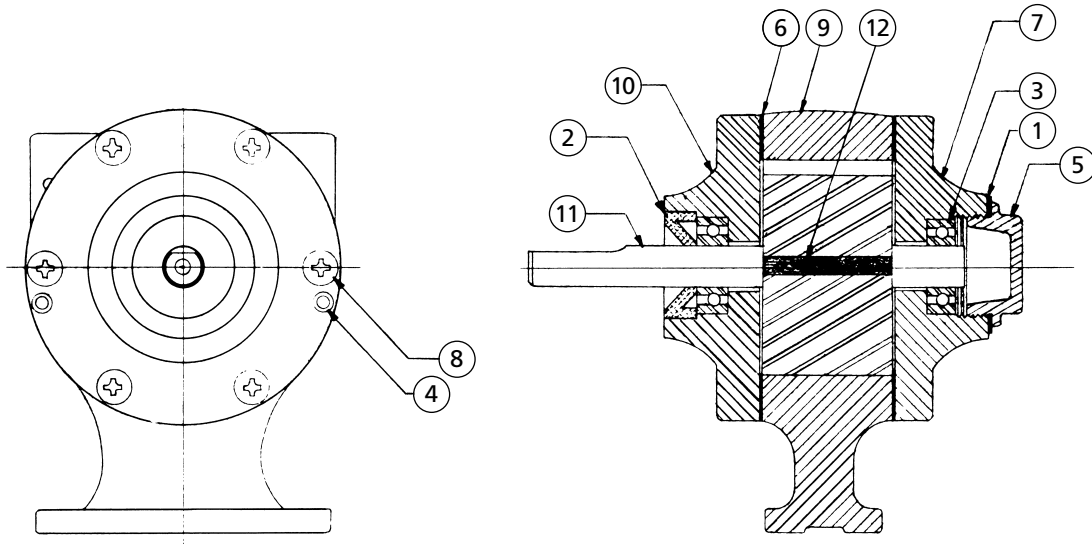
The speed of the air motor is regulated by the 73-59 air adjusting valve. The speed of the propeller shaft will be determined by the fluid, but it should never be run faster than 3,000 RPM.

### AIR SUPPLY

The air supply leading to the motor should have at least 60 PSI gauge pressure for best results.

### LUBRICATION

Air motor—the bearings are pre-lubricated and sealed. However, every 100 hrs. insert a few drops of SAE 10 non-detergent oil into the air inlet to lubricate the vanes and housing surfaces.



## PARTS LIST

When ordering, please specify Part No.

ITEM NO.	PART NO.	DESCRIPTION	QTY.	ITEM NO.	PART NO.	DESCRIPTION	QTY.
1	37-85*	END CAP GASKET .....	1	7	37-412	END PLATE .....	1
2	37-90*	SHAFT SEAL .....	1	8	37-415	SCREW .....	12
3	37-91*	BEARING .....	2	9	37-480	BODY .....	1
4	37-94	DOWEL PIN .....	4	10	37-481	FRONT PLATE .....	1
5	37-96	END CAP .....	1	11	37-483	SHAFT ASSEMBLY .....	1
6	37-337*	BODY GASKET .....	2	12	37-484*	VANE .....	4

\*Also furnished in 6-197 Repair Kit. Please order separately.

---

## **WARRANTY**

This product is covered by Binks' 1 Year Limited Warranty.

---

## **Binks Worldwide Sales and Service Listing: [www.binks.com](http://www.binks.com)**

---

### **ITW Industrial Finishing**

Binks has authorized distributors throughout the world. For technical assistance or the distributor nearest you, see listing below.

#### **U.S./Canada Technical Service Office:**

195 Internationale Blvd., Glendale Heights, IL 60139  
Toll-Free Telephone: 1-888-992-4657 (U.S.A. and Canada only)  
Toll-Free Fax: 1-888-246-5732

<b>77-1617R-3 Revisions:</b> Updated graphic standards; (P2) Added warnings; (P4) Updated contact information.
---



An Illinois Tool Works Company