

# N75C

**COIL-FED PNEUMATIC SHEATHING NAILER  
CLAVADORA NEUMÁTICA ALIMENTADA CON ROLLO  
PARA REVESTIMIENTOS**

**CLOUEUSE PNEUMATIQUE À CARTOUCHE POUR REVÊTEMENT**

# BOSTITCH®

## N75C

**COIL-FED PNEUMATIC SHEATHING NAILER  
CLAVADORA NEUMÁTICA ALIMENTADA CON ROLLO  
PARA REVESTIMIENTOS  
CLOUEUSE PNEUMATIQUE À CARTOUCHE POUR REVÊTEMENT**



**TOOL PARTS ILLUSTRATION  
ILUSTRACIÓN DE LAS PIEZAS DE LA HERRAMIENTA  
ILLUSTRATION DES PIÈCES D'OUTILLAGE**

**⚠WARNING:**

**⚠ADVERTENCIA:**

**⚠ATTENTION:**

**BEFORE PERFORMING REPAIRS ON THIS TOOL, ALL OPERATORS SHOULD STUDY THIS ILLUSTRATION, AS WELL AS THE PARTS LIST AND OPERATION AND MAINTENANCE MANUAL. OPERATORS SHOULD UNDERSTAND AND FOLLOW ALL SAFETY WARNINGS AND INSTRUCTIONS. KEEP THIS ILLUSTRATION WITH THE TOOL FOR FUTURE REFERENCE. IF YOU HAVE ANY QUESTIONS, CONTACT YOUR BOSTITCH REPRESENTATIVE DISTRIBUTOR.**

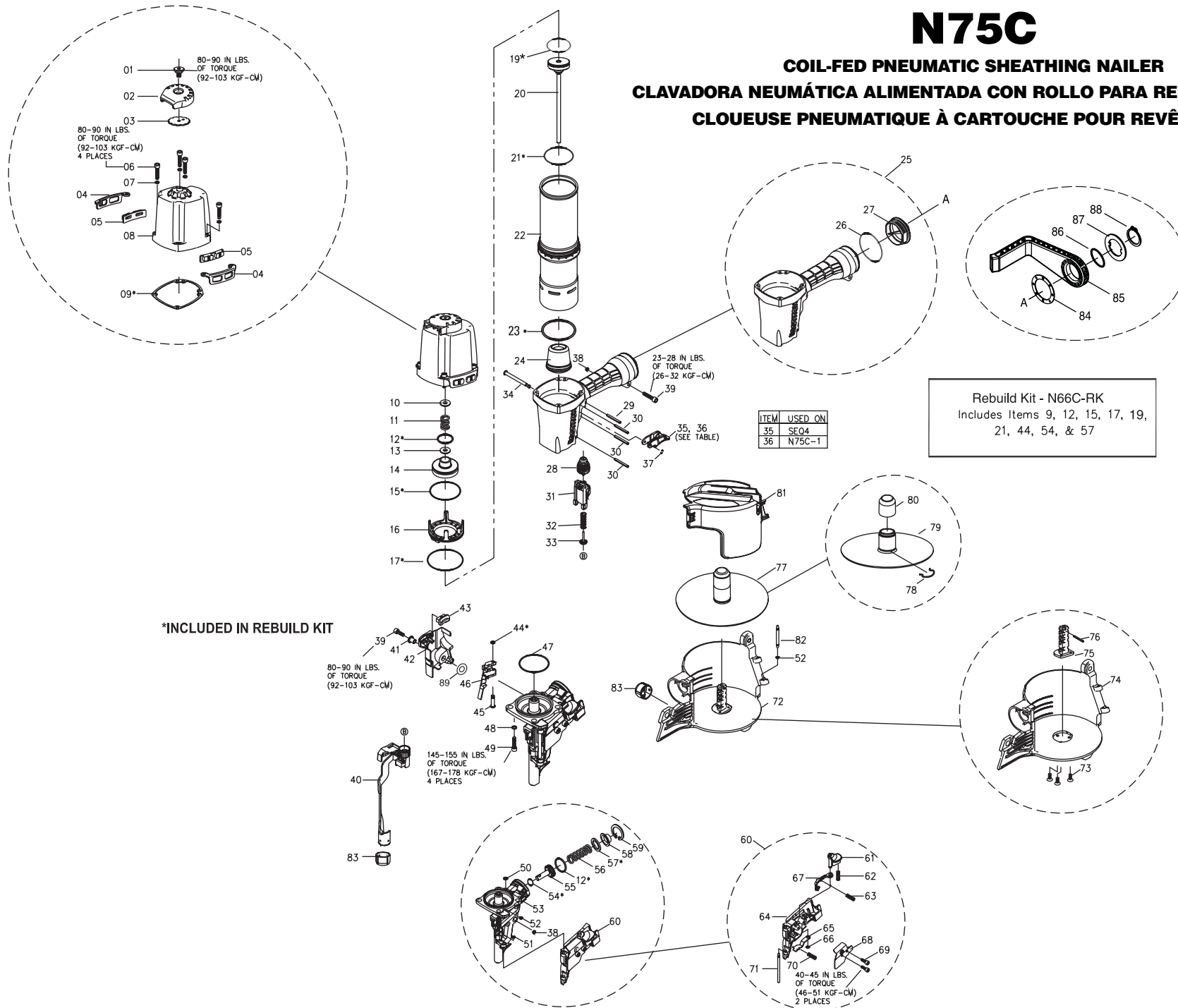
**ANTES DE LLEVAR A CABO CUALQUIER REPARACIÓN EN LA HERRAMIENTA, TODOS LOS OPERARIOS DEBERÁN ESTUDIAR ESTA ILUSTRACIÓN, ASÍ COMO LA LISTA DE PIEZAS Y EL MANUAL DE OPERACIÓN Y MANTENIMIENTO. LOS OPERARIOS DEBERÁN ENTENDER Y SEGUIR TODAS LAS ADVERTENCIAS E INSTRUCCIONES DE SEGURIDAD. CONSERVE ESTA ILUSTRACIÓN CON LA HERRAMIENTA PARA PODER CONSULTARLA EN LO FUTURO. SI TUVIERA ALGUNA PREGUNTA, PÓNGASE EN CONTACTO CON SU REPRESENTANTE O DISTRIBUIDOR DE BOSTITCH.**

**AVANT DE PROCÉDER À LA RÉPARATION DE CET OUTIL, LES OPÉRATEURS DOIVENT ÉTUDIER LA PRÉSENTE ILLUSTRATION AINSI QUE LA LISTE DE PIÈCES ET LE MANUEL D'INSTRUCTIONS ET D'ENTRETIEN ; ILS DOIVENT ÉGALEMENT COMPRENDRE ET OBSERVER LES CONSIGNES DE SÉCURITÉ ET LES INSTRUCTIONS. CONSERVER CETTE ILLUSTRATION AVEC L'OUTIL POUR RÉFÉRENCE FUTURE. SI VOUS AVEZ DES QUESTIONS, COMMUNIQUEZ AVEC VOTRE REPRÉSENTANT OU VOTRE DISTRIBUTEUR DE BOSTITCH.**

**BOSTITCH®**  
Stanley Fastening Systems L.P.

# N75C

## COIL-FED PNEUMATIC SHEATHING NAILER CLAVADORA NEUMÁTICA ALIMENTADA CON ROLLO PARA REVESTIMIENTOS CLOUEUSE PNEUMATIQUE À CARTOUCHE POUR REVÊTEMENT



## BOSTITCH

N75C		Parts List:		IP1213-2REVE	
<b>To be Used with tool parts illustration:</b>					
<b>and operation and maintenance manual:</b>				IP1213-1REVE	
<b>Serial Number on the Tool:</b>				166988	
<b>Serial Number on the Tool:</b>				N75C 07240 0000 and Higher	
ITEM	PART #	DESCRIPTION	ITEM	PART #	DESCRIPTION
1	P3030002262	SHOULDER SCREW	56	P2325205062	SPRING
2	P3030002366	EXHAUST COVER	57	P2322005100	FEED PISTON BUMPER
3	P3030002162	SET PLATE	58	P2325205262	FEED PISTON COVER
4	P3030002562	RUBBER PAD BRACKET	59	S15202800	C-RING
5	P3030002666	RUBBER PAD	60	G4601500	DOOR ASSEMBLY
6	S0110530101	HEX.SOC.HD.BOLT	61	P2320010000	DOOR LATCH
7	S0410500	SPRING WASHER	62	P2820004162	SPRING
8	G5400400	DEFLECTOR UNIT	63	P2320004100	SPRING
9	P2320000500	PACKING	64	P3030001665	DOOR
10	P2320006800	SEAL	65	P3030002862	SECOND NAIL STOPPER
11	P2325700600	SPRING	66	P2840004100	GROMMET
12	174053	O-RING, 20.8MM X 2.4MM	67	P3030002762	UPPER NAIL STOPPER
13	P2325208062	WASHER	68	P2325203862	DOOR COVER
14	P2320000700	HD.VALVE PISTON	69	S0110412101	HEX.SOC.HD.BOLT
15	174055	O-RING, 44.7MM X 3.5MM	70	P2320003900	SPRING
16	P2900002400	COLLAR	71	P2325203662	DOOR PIVOT PIN
17	174056	O-RING, 66.5MM X 2.0MM	72	P3030001000	ASSEMBLY,MAGAZINE
19	174060	O-RING, 36.0MM X 4.0MM	73	S1410408400	SELF TAPPING SCREW
20	G0214900	DRIVER UNIT	74	P3030000900	MAGAZINE UNIT
21	174058	O-RING, 45.5MM X 2.0MM	75	P3030000866	ADJUSTING POST
22	P3032000400	CYLINDER	76	S0802512000	SPRING PIN
23	86460	O-RING,1.859X.139	77	G7700200	ASSEMBLY,NAIL HOLDER
24	P3030000600	BUMPER	78	P2325207062	SPRING CLIP
25	P3490000600	ASSEMBLY,FRAME UNIT	79	P3030001466	NAIL HOLDER
26	S06A013300	O-RING	80	P2320005800	NAIL HOLDER COVER
27	P3490000540	END CAP	81	P3030001866	MAGAZINE COVER
28	TVA6	KIT,TRIGGER VALVE	82	P2845202662	PIN
29	S0803022000	SPRING PIN	83	P3030001732	SAFETY SLEEVE
30	S0803030000	SPRING PIN	84	175582	SEAT PLATE, HOOK
31	P2840002766	SAFETY GUIDE	85	175583	HOOK
32	P2325202662	SPRING	86	175557	O-RING, 21.9MMX2.62MM
33	P2845203062	SPRING HOLDER	87	175585	CAP, HOOK
34	P2845202962	STEPPED PIN	88	175586	RING, RETAINING
35	SEQ4	KIT,SEQUENTIAL TRIP CONVERSION	89	P3490000200	WASHER
36	CNTK1	KIT,CONTACT TRIP CONVERSION			
37	S06A010300	O-RING			
38	S0710500	NYLON LOCK NUT			
39	S0110520100	HEX SOC.HD.BOLT			
40	G4006600	ASSEMBLY,CONTACT ARM			
41	P2325205662	MAGAZINE SPACER			
42	P2320005500	GUARD			
43	P2320005400	RUBBER PAD			
44	S06A000500	O-RING			
45	P2325207562	SPRING PIN			
46	G7600300	ASSEMBLY,FEED/JAW CONNECTION			
47	S06A003100	O-RING			
48	S0410600	SPRING WASHER			
49	S0110620101	HEX.SOC.HD.BOLT			
50	S06P000400	O-RING			
51	S06S000401	O-RING			
52	S06P000300	O-RING			
53	P3030000565	NOSE			
54	S06P000900	O-RING			