

DDP 120B-WB / DPS 120B-WB

DDP 90F-FN / DPS 90F-FN



Double diaphragm paint pumps



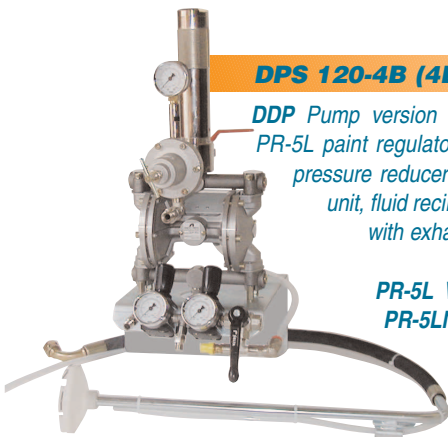
DPS 120-1B - DPS 90-1F

DDP Pump version mounted on a stand with PR-5L paint regulator, 2 air pressure reducers (for pump and gun), dip tube with filter, paint filter unit, fluid recirculation, 1 overpressure valve, 1 ball valve with exhaust hole.

DPS 120-3B - (3B WB)/ DPS 903 F (903 FN)

DDP Pump version mounted on a trailer with PR-5L paint regulator, air pressure reducing filter (for gun), air pressure reducer (for pump), dip tube with filter, paint filter unit, fluid recirculation, 1 overpressure valve, 1 ball valve with exhaust hole.

PR-5L WB paint regulator for **DPS 120-3B WB**
PR-5LN paint regulator for **DPS 903 FN**



DPS 120-4B (4B WB)/ DPS 904 F (DPS 904 FN)

DDP Pump version mounted on wall mounting bracket with PR-5L paint regulator, air pressure reducing filter (for gun), air pressure reducer (for pump), dip tube with filter, paint filter unit, fluid recirculation, 1 overpressure valve, 1 ball valve with exhaust hole.

PR-5L WB paint regulator for **DPS 120-4B WB**
PR-5LN paint regulator for **DPS 904 FN**



DPS 120-36B - (36B WB)/ DPS 9036 F

DDP Pump version mounted on a trailer with plastic hopper (6 litres with 50 mesh filter), PR-5L paint regulator, air pressure reducing filter (for gun), air pressure reducer (for pump), paint filter unit, fluid recirculation, 1 overpressure valve, 1 ball valve with exhaust hole.

PR-5L WB paint regulator for **DPS 120-36B WB**



PR-5L Paint Pressure Regulator

- Pressure ratio: 1:1
- Max. Fluid Output: 2.0 l/min
 - Max. Pressure Output: from 0 to 3 bar
 - Fluid joint input: G 3/8"
 - Fluid joint output: G 1/4"
- Versions: Stainless steel
Aluminim
Teflon coated

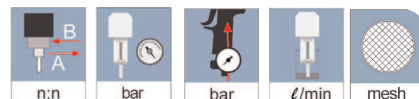


DDP 120B-WB / DPS 120B-WB

DDP 90F-FN / DPS 90F-FN

Double diaphragm paint pumps

Air Nipple: G1/4"
Fluid Nipple: G3/8"



Model

DDP 120B- DDP 120B WB	1:1	6.8	6.8	-	-
DPS 120B- DPS 120B WB	1:1	6.8	6.8	30	50
DDP 90F- DDP 90FN	1:1	6.8	6.8	10	-
DPS 90F- DPS 90FN	1:1	6.8	6.8	10	100

• Available in solvent based paint versions and water based paint versions:

	Code	Model	Paint Regulator	€	
DPS 120B	10120S0000	DDP 120B DOUBLE DIPHRAGM PUMP		734,00	
	1120S51100	DPS 120-1B DOUBLE DIPHRAGM PUMP SET	with PR-5L	1.007,00	
	1120S53100	DPS 120-3B DOUBLE DIPHRAGM PUMP SET	with PR-5L	1.224,00	
	1120S54100	DPS 120-4B DOUBLE DIPHRAGM PUMP SET	with PR-5L	1.224,00	
	1120S53600	DPS 120-36B DOUBLE DIPHRAGM PUMP SET	with PR-5L	1.260,00	
	Water based paint version				
	10120W0000	DDP 120B WB DOUBLE DIPHRAGM PUMP SET		1.084,00	
	1120W53100	DPS 120-3B WB DOUBLE DIPHRAGM PUMP SET	with PR-5L WB	1.660,00	
	1120W54100	DPS 120-4B WB DOUBLE DIPHRAGM PUMP SET	with PR-5L WB	1.690,00	
	1120W53600	DPS 120-36B WB DOUBLE DIPHRAGM PUMP SET	with PR-5L WB	1.690,00	
DPS 90 F	10900S0003	DDP 90 F DOUBLE DIPHRAGM PUMP		701,00	
	1090S51100	DPS 901 F DOUBLE DIPHRAGM PUMP SET	with PR-5L	958,00	
	1090S53100	DPS 903 F DOUBLE DIPHRAGM PUMP SET	with PR-5L	1.173,00	
	1090S54100	DPS 904 F DOUBLE DIPHRAGM PUMP SET	with PR-5L	1.173,00	
	1090S53600	DPS 9036 F DOUBLE DIPHRAGM PUMP SET	with PR-5L	1.205,00	
	Water based paint version				
	10090N0000	DDP 90 FN DOUBLE DIPHRAGM PUMP SET	with PR-5LN	1.040,00	
	1090N53100	DPS 903 FN DOUBLE DIPHRAGM PUMP SET	with PR-5LN	2.042,00	
	1090N54100	DPS 904 FN DOUBLE DIPHRAGM PUMP SET	with PR-5LN	1.958,00	

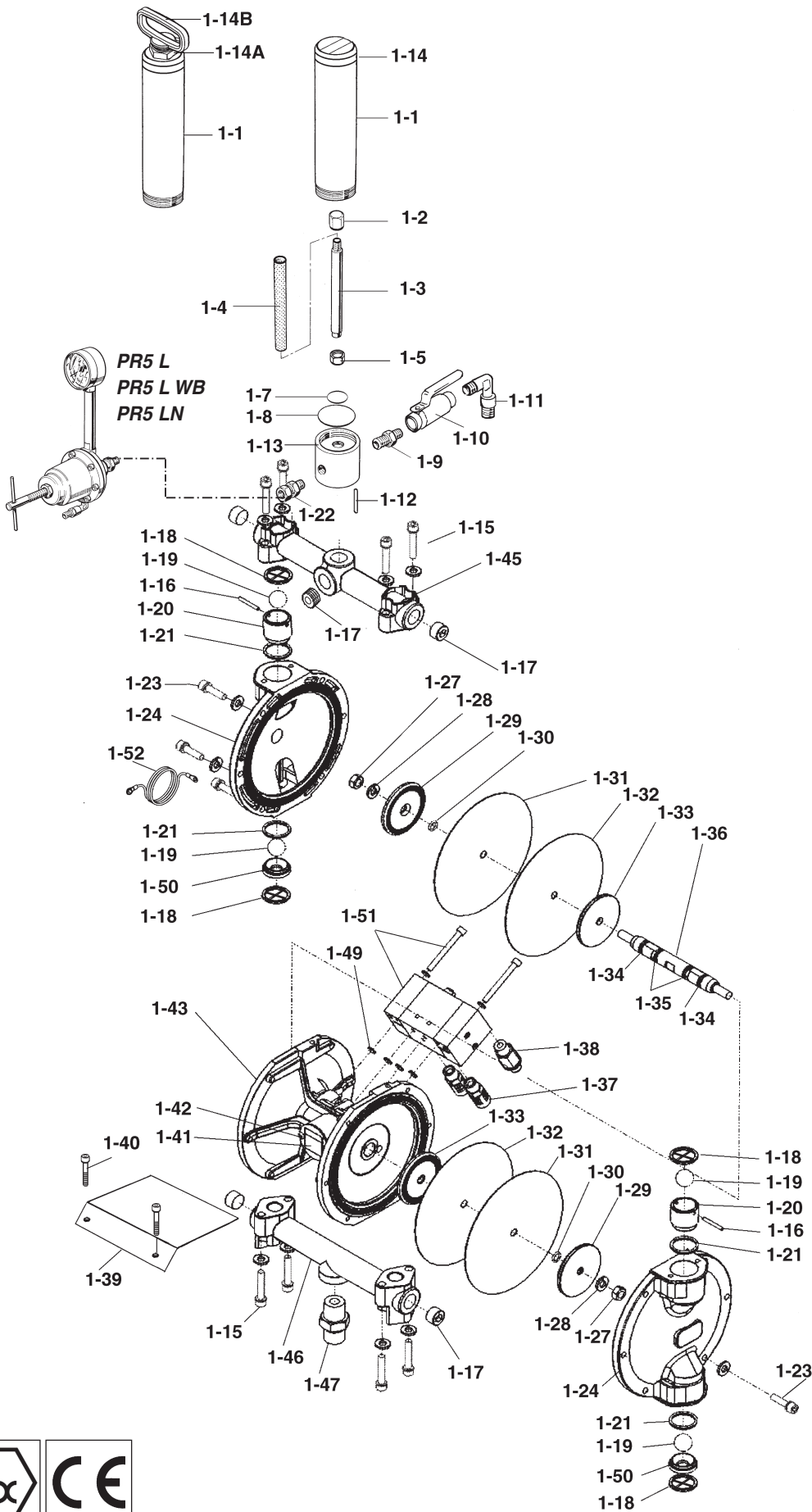
Accessories

AG10100000	PF 1 N PAINT FILTER SET IN STAINLESS STEEL WITH PLUG (OPTIONAL)	150,00
AG10200000	PF 2 N PAINT FILTER SET IN STAINLESS STEEL WITH HANDLE (DPS 120-3B WB/ 36BWB/4BWB) • (DPS 90-3FN/4FN)	160,00
UL300441	PF 2 PAINT FILTER SET IN ALUMINIUM WITH HANDLE (DPS 120-3B /36B/4B) • (DPS 90-3F/4F/36F)	90,00
UL300440	PF 1 PAINT FILTER SET IN ALUMINIUM WITH PLUG (DPS 120-1B / DPS 90-1F)	80,00
0200309701	AIR REGULATOR SET (DPS 120 1B/ DPS 901F)	159,00
0200309901	AIR REGULATOR SET (DPS 120-3B WB/ 36BWB/4BWB) • (DPS 90-3FN/4FN)	177,00

Uses:

DPS 120-B - DPS 120-B WB								
DPS 90F - DPS 90FN								

DDP 120B-WB / DPS 120B-WB DDP 90F-FN / DPS 90F-FN



Double diaphragm paint pumps



DDP 120B-WB / DPS 120B-WB DDP 90F-FN / DPS 90F-FN

Ref.	Spares	Code	DDP 120B	DDP 120B WB	DDP 90F	DDP 90FN	€
ref. part 1-1	CYLINDER IN ALLUMINIUM	UL300024	x		x		10,39
ref. part 1-1	CYLINDER	AG10000310		x		x	30,53
ref. part 1-2	NUT	0457000400	x	x	x	x	6,11
ref. part 1-3	FILTER BOLT	UL300027	x		x		5,26
ref. part 1-3	FILTER BOLT	AG10000710		x		x	27,13
ref. part 1-4	FILTER 100 Mesh	VFM2503	x	x	x	x	3,00
ref. part 1-5	FILTER BOLT NUT	AG10001900	x	x	x	x	3,44
ref. part 1-7	PACKING	AG10001200	x	x	x	x	2,64
ref. part 1-8	PACKING	AG10000401	x	x	x	x	3,69
ref. part 1-9	NIPPLE	UL300101	x		x		2,84
ref. part 1-9	NIPPLE	UL300462		x		x	14,54
ref. part 1-10	2 WAY VALVE	UL300351	x	x	x	x	9,32
ref. part 1-11	L JOINT	UL300205	x	x	x	x	3,74
ref. part 1-12	SPRING PIN	AG100009	x	x	x	x	0,05
ref. part 1-13	BODY	UL300025	x		x		10,88
ref. part 1-13	BODY	AG10000510		x		x	38,45
ref. part 1-14	PLUG	UL300023	x		x		5,00
ref. part 1-14	PLUG	UL300028		x		x	18,32
ref. part 1-14A	HANDLE PLUG IN ALLUMINIUM	UL300026	x		x		6,40
ref. part 1-14A	HANDLE PLUG IN STAINLESS STEEL	UL300029		x		x	10,14
ref. part 1-14B	HANDLE	04470100	x	x	x	x	20,62
ref. part 1-15	HEXAGON SOCKET BOLT WITH WASHER	96357502	x	x	x	x	0,96
ref. part 1-16	PIN	94444630	x	x			2,07
ref. part 1-17	HEXAGON SOCKET PLUG	96990413	x		x		2,63
ref. part 1-17	HEXAGON SOCKET PLUG	96367202		x		x	6,67
ref. part 1-18	PACKING SET (2 pcs./1pk.)	94933290	x	x			12,76
ref. part 1-18	PACKING SET (2 pcs./1pk.)	94935620			x	x	6,23
ref. part 1-19	STEEL BALL SET (2 pcs./1pk.)	94934290	x	x			22,53
ref. part 1-19	STEEL BALL SET (2 pcs./1pk.)	94930630			x	x	9,52
ref. part 1-20	EXHAUST VALVE (2 pcs./1pk.)	94935290	x	x			41,00
ref. part 1-20	EXHAUST VALVE (2 pcs./1pk.)	94931630			x	x	21,70
ref. part 1-21	O RING SET (2 pcs./1pk.)	94930300	x	x			2,62
ref. part 1-21	O RING SET (2 pcs./1pk.)	94932630			x	x	1,39
ref. part 1-22	SWIVEL JOINT	UL300019	x		x		5,37
ref. part 1-22	SWIVEL JOINT	UL300402		x		x	34,74
ref. part 1-23	BOLT + SPRING WASHER	96357500			x	x	0,77
ref. part 1-24	LID	94439631	x				73,68
ref. part 1-24	LID in P.T.F.E.	94439650		x			80,70
ref. part 1-24	LID	94456582			x		73,68
ref. part 1-24	LID	94414592				x	115,79
ref. part 1-27	HEXAGON NUT	96361081	x	x	x	x	0,64
ref. part 1-28	SPRING WASHER	06362080	x	x	x	x	0,11
ref. part 1-29	DIAPHRAGM HOLDER (OUTER)	94448630	x	x			12,38
ref. part 1-29	DIAPHRAGM HOLDER (OUTER)	94414600			x	x	11,60
ref. part 1-30	O RING	96630008	x	x	x	x	0,77
ref. part 1-31/1-32	DIAPHRAGM SET (2 IN +2 OUT)	94932300	x	x			120,00
ref. part 1-31/1-32	DIAPHRAGM SET (2 IN +2 OUT)	94931620			x	x	58,00
ref. part 1-33	DIAPHRAGM HOLDER (INNER)	94449631	x	x			17,54
ref. part 1-33	DIAPHRAGM HOLDER (INNER)	94453581			x	x	8,07
ref. part 1-34	Y SHAPE PACKING	96996610	x	x	x	x	5,67
ref. part 1-35	O RING	96630011	x	x	x	x	0,93
ref. part 1-36	ROD	94431590	x	x	x	x	102,18
ref. part 1-37	MUFFLER	94432590	x	x	x	x	11,33
ref. part 1-38	HALF UNION	96801202	x	x	x	x	4,21
ref. part 1-39	COVER	04422580	x	x	x	x	1,94
ref. part 1-40	HEXAGON SOCKET BOLT	06350612	x	x	x	x	0,35
ref. part 1-41	BLANKING COVER	94456570	x	x	x	x	7,83
ref. part 1-42	TAPPING SCREW	96234002	x	x	x	x	0,35
ref. part 1-43	MAIN BODY	94437632	x	x			168,42
ref. part 1-43	MAIN BODY	94410622			x	x	303,00
ref. part 1-45	ADAPTOR UPPER	94452640	x		x		72,55
ref. part 1-45	ADAPTOR UPPER in P.T.F.E.	94452650		x			73,68
ref. part 1-45	ADAPTOR UPPER	94415592				x	101,75
ref. part 1-46	ADAPTOR LOWER	94441630	x		x		73,68
ref. part 1-46	ADAPTER LOWER in P.T.F.E.	94441640		x			80,70
ref. part 1-46	ADAPTOR LOWER	94416592				x	115,79
ref. part 1-47	JOINT	94427640	x		x		7,73
ref. part 1-47	JOINT	94428640		x		x	19,58
ref. part 1-49	O RING	96630006	x	x			0,46
ref. part 1-49	O RING	96630004			x	x	0,31
ref. part 1-50	INTAKE VALVE (2 pcs./1pk.)	94446630	x	x			34,77
ref. part 1-50	INTAKE VALVE (2 pcs./1pk.)	94933630			x	x	18,41
ref. part 1-51	AIR OPERATING VALVE SET	94490631	x	x	x	x	108,77
ref. part 1-52	GROUND CABLE SET	ME100001	x	x	x	x	3,49