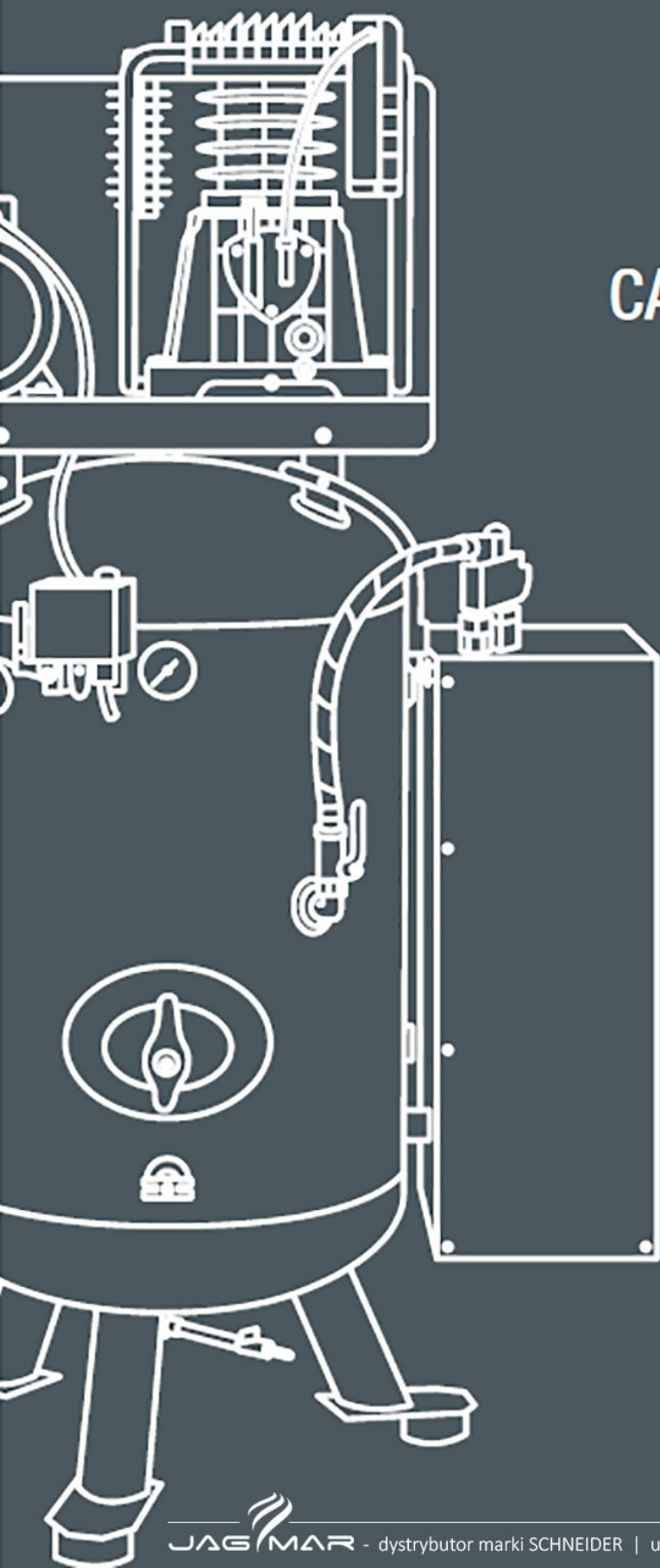




CATALOGUE

2018



50
YEARS

UniMaster

Flexible and user-friendly –
for universal use



User-friendly operating panel for easy reading of the pressure gauges and protection of sensitive parts



Long handle ensures particularly convenient transportation



Flexible operation thanks to separate outlets for un-oiled and oiled compressed air, with safety quick-action coupling



15-year warranty against rust and corrosion on the vessel



Easy to manoeuvre and resistant to punctures due to hard-wearing, soft rubber wheels



High operating comfort due to condensate drainage at operation level



Good handling characteristics thanks to guide rolls at the front



Example: UniMaster UNM 410-10-50 WX

From private use through to professional workshop applications:
The main characteristics of mobile UniMaster compressors
are simple handling and a high degree of flexibility.
The EXTRA version also impresses with its ample equipment
and highest level of operating comfort.

UNM 210-8-25 W



UNM 210-8-25 WXOF



- Large wheels and welded rear handle for ease of transportation
- Robust, durable components

✓	Close-coupled 1-cylinder piston compressor	✓
✓	Large wheels	✓
✓	10-year guarantee against rust and corrosion on vessels	✓
	Oil-free, low-maintenance power unit	✓
✓	Air outlet via pressure reducer	
	Air outlet via filter pressure reducer	✓

Model	Art. no.	Pressure (bar)	Suction power (l/min)	Inflation performance (l/min)	Drive power (kW)	Voltage (V)	Rotational speed (rpm)	Tank vol. (l)	Weight (kg)	Noise (dB(A)) ¹⁾	Dimensions (WxDxH)
UNM 210-8-25 W	A711000	8	200	110	1.1	230	2,850	24	25	95	655x365x595
UNM 210-8-25 WXOF	A711001	8	210	120	1.1	230	2,850	24	24	94	655x365x635

¹⁾ Sound power level according to DIN EN ISO 3744 (RL 2000/14/EC)

Additional technical features: With all safety fittings, high-quality Condor pressure switch, as well as 2 m device supply cable with rubber sheath, as standard

Tip

An oil-free compressor reduces maintenance and does not generate compressed air that contains impure oil from the compressor.

UNM 260 / 310-10-50 W

UNM 260 / 310-10-50 WX

- Large wheels and welded rear handle for ease of transportation
- Robust, durable components
- Filter pressure reducer for better working results



✓	Close-coupled 1-cylinder piston compressor	✓
✓	Large wheels	✓
✓	10-year guarantee against rust and corrosion on vessels	
	15-year guarantee against rust and corrosion on the vessel with inner coating	✓
	4 m cable with rubber sheath	✓
	With guide rolls	✓
	Air outlet via filter pressure reducer with 2 quick-release couplings	✓



Model	Art. no.	Pressure (bar)	Suction power (l/min)	Inflation performance (l/min)	Drive power (kW)	Voltage (V)	Rotation speed (rpm)	Tank vol. (l)	Weight (kg)	Noise (dB(A)) ¹⁾	Dimensions (WxDxH)
UNM 260-10-50 W	A712000	10	260	160	1,5	230	2.850	50	32	95	770x425x640
UNM 260-10-50 WX	A712001	10	260	160	1,5	230	2.850	50	33	95	770x425x640
UNM 310-10-50 W	A712010	10	285	195	1,8	230	2.850	50	33	97	770x425x700
UNM 310-10-50 WX	A712011	10	285	195	1,8	230	2.850	50	34	97	770x425x700

¹⁾ Sound power level according to DIN EN ISO 3744 (RL 2000/14/EC)

Additional technical features: With all safety fittings, high-quality Condor pressure switch, as well as 2 m device supply cable with rubber sheath, as standard

Tip

The peripheral equipment of the EXTRA versions such as guide rolls and 4 m connection cable make mobile use easier.

UNM 410-10-50 W / D

UNM 410-10-50 WX / DX

- Powerful 2-cylinder power unit for applications with high air requirements
- Alternating current or three-phase current version suitable for any application
- Filter pressure reducer for better working results
- Low compressor speed, which is gentle on the compressor components and also reduces the noise level and vibrations



✓	V-belt driven, 2-cylinder piston compressor	✓
✓	10-year guarantee against rust and corrosion on vessels	
	15-year guarantee against rust and corrosion on the vessel with inner coating	✓
	User-friendly operating panel with mist oiler and filter pressure reducer	✓
✓	With guide rolls	✓
	Soft puncture-proof rubber wheels for a high level of comfort	✓
	With 2 safety quick-release couplings with a particularly high flow capacity	✓
	Condensate drainage via the ball valve at the operating panel	✓
	4 m cable with rubber sheath and cable hooks	✓



Model	Art. no.	Pressure (bar)	Suction power (l/min)	Inflation performance (l/min)	Drive power (kW)	Voltage (V)	Rotational speed (rpm)	Tank vol. (l)	Weight (kg)	Noise (dB(A)) ¹⁾	Dimensions (WxDxH)
UNM 410-10-50 W	A713000	10	410	295	2.2	230	1,000	50	64	97	950x410x815
UNM 410-10-50 WX	A713001	10	410	295	2.2	230	1,000	50	68	97	950x410x875
UNM 410-10-50 D	A713010	10	410	295	2.2	400	1,000	50	62	96	950x410x815
UNM 410-10-50 DX	A713011	10	410	295	2.2	400	1,000	50	67	96	950x410x875

¹⁾ Sound power level according to DIN EN ISO 3744 (RL 2000/14/EC)

Additional technical features: With all safety fittings, high-quality Condor pressure switch, as well as 2 m device supply cable with rubber sheath and plug with phase inverter for three-phase current versions, as standard

Tip

The soft rubber wheels and the welded rear handle on the EXTRA versions facilitate loading and transportation.

UNM 510 / 660 / 580 D

UNM 510 / 660 / 580 DX

- Powerful 2-cylinder power unit for applications with very high air requirements
- For any application: in 10 or 15 bar version
- 90 l vessel for high air requirements
- Low compressor speed, which is gentle on the compressor components and also reduces the noise level and vibrations



✓	V-belt driven, two-stage (510-10-90 D/DX single-stage) 2-cylinder piston compressor	✓
✓	10-year guarantee against rust and corrosion on vessels	
	15-year guarantee against rust and corrosion on the vessel with inner coating	✓
	User-friendly operating panel with mist oiler and filter pressure reducer	✓
✓	With guide rolls	✓
	Soft puncture-proof rubber wheels for a high level of comfort	✓
	With 2 safety quick-release couplings with a particularly high flow capacity	✓
	Condensate drainage via the ball valve at the operating panel	✓
	4 m cable with rubber sheath and cable hooks	✓



Model	Art. no.	Pressure (bar)	Suction power (l/min)	Inflation performance (l/min)	Drive power (kW)	Voltage (V)	Rotational speed (rpm)	Tank vol. (l)	Weight (kg)	Noise (dB(A)) ¹⁾	Dimensions (WxDxH)
UNM 510-10-90 D	A714000	10	510	390	3	400	1,240	90	80	97	1,110x495x910
UNM 510-10-90 DX	A714001	10	510	390	3	400	1,240	90	84	97	1,100x505x935
UNM 660-10-90 D	A715000	10	660	520	4	400	1,000	90	102	97	1,110x495x1,015
UNM 660-10-90 DX	A715001	10	660	520	4	400	1,000	90	106	97	1,100x505x1,015
UNM 580-15-90 D	A715100	15	580	470	4	400	915	90	111	95	1,110x495x1,015
UNM 580-15-90 DX	A715101	15	580	470	4	400	915	90	116	95	1,100x505x1,015

¹⁾ Sound power level according to DIN EN ISO 3744 (RL 2000/14/EC)

Additional technical features: With all safety fittings, high-quality Condor pressure switch, as well as 2 m device supply cable with rubber sheath and plug with phase inverter, as standard

Tip

The condensate drainage on the operating panel of the EXTRA versions allows for easy maintenance.

UNM 150-8-25 W Base

UNM 350-10-50 W Base

- Compressors with functional equipment for frequent use
- Easy to transport with optimally positioned handle and welded rear handle



✓	Close-coupled 1- or 2-cylinder piston compressor	✓
✓	5-year guarantee against rust and corrosion on vessels	✓
✓	Large wheels and welded handle for ease of transportation	✓
✓	Two pressure gauges for reading the vessel and working pressure	✓



Model	Art. no.	Pressure (bar)	Suction power (l/min)	Inflation performance (l/min)	Drive power (kW)	Voltage (V)	Rotational speed (rpm)	Tank vol. (l)	Weight (kg)	Noise (dB(A)) ¹⁾	Dimensions (WxDxH)
UNM 150-8-25 W Base	A711002	8	150	80	1,1	230	2.850	24	23	95	580x245x620
UNM 350-10-50 W Base	A713002	10	340	200	2,0	230	2.850	50	60	95	770x425x730

¹⁾ Sound power level according to DIN EN ISO 3744 (RL 2000/14/EC)

Additional technical features: Equipped with all safety fittings and electric connection cable as standard

PEM 500-15-50 B

- Can be operated independent of mains supply with petrol-driven unit
- Powerful 2-cylinder power unit for applications with very high air requirements
- Fully automatic operation with idling and speed regulation

V-belt driven, two-stage 2-cylinder piston compressor with petrol engine	✓
15-year rust guarantee on the vessel with inner coating	✓
Equipped with mist oiler and filter pressure reducer	✓
Two pressure gauges for vessel and working pressure	✓
Large, puncture-proof solid rubber wheels for maximum drive comfort	✓
Easily accessible condensate drain cock	✓



Model	Art. no.	Pressure (bar)	Suction power (l/min)	Inflation performance (l/min)	Drive power (kW)	Rotational speed (rpm)	Tank vol. (l)	Weight (kg)	Noise (dB(A)) ¹⁾	Dimensions (WxDxH)
PEM 500-15-50 B	A444002	15	500	400	6,6	1.140	50	114	97	1.060x490x960

¹⁾ Sound power level according to DIN EN ISO 3744 (RL 2000/14/EC)

Additional technical features: Fully equipped with all the necessary safety fittings

Tip

The CPM 500-15-50 B is not only suitable for construction sites, but is also an ideal addition for breakdown service vehicles, where high-performance equipment is required.

CompactMaster model overview

Model	Art. no.	Pressure (bar)	Suction power (l/min)	Drive power (kW)	Vessel volume (l)	Page in the catalogue
CPM 170-8-2 WOF	A201000	8	150	1.1	2	22
CPM 170-8-6 WOF	A202000	8	150	1.1	6	22
CPM 210-10-3 W	A222000	10	200	1.1	2.5	23
CPM 110-15-3 W	A221000	15	85	0.6	2.5	23
CPM 210-8-10 W	A211000	8	200	1.1	10	24
CPM 210-8-10 WXOF	A211001	8	210	1.1	10	24
CPM 260-10-10 W	A212000	10	250	1.5	10	24
CPM 260-10-10 WX	A212001	10	250	1.5	10	24
CPM 310-10-20 W	A213000	10	285	1.8	20	25
CPM 310-10-20 WX	A213001	10	285	1.8	20	25
CPM 360-10-20 W	A214000	10	355	2	20	25
CPM 360-10-20 WX	A214001	10	355	2	20	25
CPM 150-8-6 WOF Base	A202002	8	150	1.1	6	26
CPM 200-8-10 W Base	A211002	8	150	1.1	10	26
CPM 280-10-20 B	A215000	10	275	3	20	27
CPM L 310-10-20 WX	A223001	10	285	1.8	20	30
CPM L 330-10-20 WX	A224001	10	300	1.8	20	30

CompactMaster

Extremely powerful and easy to use –
the perfect companion for the construction site



Particularly user-friendly operating panel
provides a clear view of the pressure gauge and protects sensitive parts



Particularly comfortable height-adjustable bracket for extremely easy transportation



4 m cable with practical cable holder for an extra-large working radius



Easy to manoeuvre due to hard-wearing puncture-resistant soft rubber wheels



15-year warranty against rust and corrosion on the vessel



Example: CompactMaster CPM 360-10-20 WX

Designed for demanding heavy-duty applications on the construction site:

The robust, compact and lightweight design of the CompactMaster compressor makes it a reliable partner, e.g. for interior fittings or shell construction. Available as a portable or mobile version with height-adjustable bracket depending on requirements.

Extremely powerful, easy to handle

CompactMaster

CPM 170-8-2 WOF

CPM 170-8-6 WOF

- Extremely handy thanks to lightweight and compact design
- Low maintenance thanks to oil-free compressor
- Surrounding steel frame provides effective protection for all fittings



✓	Close-coupled 1-cylinder piston compressor	✓
✓	Two pressure gauges for vessel and working pressure	✓
✓	4 large rubber feet for extra stability and ease of transportation	✓
✓	Easily accessible condensate drain cock	✓



Model	Art. no.	Pressure (bar)	Suction power (l/min)	Inflation performance (l/min)	Drive power (kW)	Voltage (V)	Rotational speed (rpm)	Tank vol. (l)	Weight (kg)	Noise (dB(A)) ¹⁾	Dimensions (WxDxH)
CPM 170-8-2 WOF	A201000	8	150	70	1.1	230	2,850	2	11	95	360x270x450
CPM 170-8-6 WOF	A202000	8	150	70	1.1	230	2,850	6	13	95	360x310x490

¹⁾ Sound power level according to DIN EN ISO 3744 (RL 2000/14/EC)

Additional technical features: With all safety fittings, high-quality Condor pressure switch, as well as 2 m device supply cable with rubber sheath, as standard

Tip

An oil-free compressor reduces maintenance and does not generate compressed air that contains impure oil from the compressor.

CPM 210-10-3 W**CPM 110-15-3 W**

- Suitable for demanding professional assembly work
- Optimised for use on construction sites thanks to robust design and optimal transport properties
- Extremely compact thanks to pressure tank integrated into steel frame
- For any application: in 10 or 15 bar version



✓	Close-coupled 1-cylinder piston compressor	✓
✓	Air outlet via filter pressure reducer	✓
✓	Two pressure gauges for vessel and working pressure	✓
✓	4 large rubber feet for extra stability and ease of transportation	✓
✓	10-year guarantee against rust and corrosion on vessels	✓
	Two air outlets on quick coupling; one of which is suitable for full pressure	✓
	Pressure up to 15 bar	✓



Model	Art. no.	Pressure (bar)	Suction power (l/min)	Inflation performance (l/min)	Drive power (kW)	Voltage (V)	Rotation speed (rpm)	Tank vol. (l)	Weight (kg)	Noise (dB(A)) ¹⁾	Dimensions (WxDxH)
CPM 210-10-3 W	A222000	10	200	110	1.1	230	2,850	2.5	20.5	95	310x580x405
CPM 110-15-3 W	A221000	15	85	49	0.6	230	1,450	2.5	19.5	83	310x580x405

¹⁾ Sound power level according to DIN EN ISO 3744 (RL 2000/14/EC)

Technische Zusatzmerkmale: Serienmäßig mit allen Sicherheitsarmaturen, Filterdruckminderer, hochwertigem Druckschalter sowie 2 m Gerätezuleitung mit Gummiummantelung

Tip

The water separator with filter at the pressure reducer reduces dirt particles, condensate and oil in the compressed air, thus increasing the service life of pneumatic tools.

Extremely powerful, easy to handle

CompactMaster

CPM 210 / 260 W

CPM 210 WXOF / 260 WX



- Lightweight design and carrying handles make it ideal for transportation
- Safety strut for maximum protection of fitting

✓	Close-coupled 1-cylinder piston compressor	✓
✓	Welded support tube with rubber handle	✓
✓	10-year guarantee against rust and corrosion on vessels	
	15-year guarantee against rust and corrosion on the vessel with inner coating	✓
✓	Air outlet via pressure reducer	
	Air outlet via filter pressure reducer	✓
	4 m cable with rubber sheath	✓
	CPM 210 WXOF: oil-free, low-maintenance power unit	✓



Model	Art. no.	Pressure (bar)	Suction power (l/min)	Inflation performance (l/min)	Drive power (kW)	Voltage (V)	Rotation speed (rpm)	Tank vol. (l)	Weight (kg)	Noise (dB(A)) ¹⁾	Dimensions (WxDxH)
CPM 210-8-10 W	A211000	8	200	110	1.1	230	2,850	10	24	95	420x340x620
CPM 210-8-10 WXOF	A211001	8	210	120	1.1	230	2,850	10	21	95	420x340x620
CPM 260-10-10 W	A212000	10	250	150	1.5	230	2,850	10	25	95	420x340x620
CPM 260-10-10 WX	A212001	10	250	150	1.5	230	2,850	10	26	95	420x340x620

¹⁾ Sound power level according to DIN EN ISO 3744 (RL 2000/14/EC)

Additional technical features: With all safety fittings, high-quality Condor pressure switch, as well as 2 m device supply cable with rubber sheath, as standard

Tip

An oil-free compressor reduces maintenance and does not generate compressed air that contains impure oil from the compressor.

CPM 310 / 360-10-20 W

CPM 310 / 360-10-20 WX



- Practical handles make it ideal for transportation
- Large wheels for greater mobility and flexibility
- Efficient power units for applications with high air requirements

✓	Close-coupled 1-cylinder or 2-cylinder piston compressor	✓
✓	Welded support tube with rubber handle	
	Height-adjustable bracket for outstanding transportation characteristics	✓
✓	10-year guarantee against rust and corrosion on vessels	
	15-year guarantee against rust and corrosion on the vessel with inner coating	✓
✓	Air outlet via filter pressure reducer	
	User-friendly operating panel with mist oiler and filter pressure reducer	✓
	Soft puncture-proof rubber wheels for a high level of comfort	✓
	4 m cable with rubber sheath and cable hooks	✓



Model	Art. no.	Pressure (bar)	Suction power (l/min)	Inflation performance (l/min)	Drive power (kW)	Voltage (V)	Rotational speed (rpm)	Tank vol. (l)	Weight (kg)	Noise (dB(A)) ¹⁾	Dimensions (WxDxH)
CPM 310-10-20 W	A213000	10	285	195	1.8	230	2,850	20	32	97	520x430x810
CPM 310-10-20 WX	A213001	10	285	195	1.8	230	2,850	20	33	97	520x340x860
CPM 360-10-20 W	A214000	10	355	225	2	230	2,850	20	39	95	520x430x810
CPM 360-10-20 WX	A214001	10	355	225	2	230	2,850	20	40	95	520x430x860

¹⁾ Sound power level according to DIN EN ISO 3744 (RL 2000/14/EC)

Additional technical features: With all safety fittings, high-quality Condor pressure switch, as well as 2 m device supply cable with rubber sheath, as standard

Tip

Test the ingenious features of the EXTRA variants. For example, the pull-out handle and soft rubber wheels redefine the word „mobility“.

Extremely powerful, easy to handle

CompactMaster

CPM 150-8-6 WOF Base

CPM 200-8-10 W Base

- Compressors with functional equipment for frequent use



✓	Close-coupled 1-cylinder piston compressor	✓
✓	Extremely easy to handle thanks to lightweight and compact design	
✓	Low maintenance thanks to oil-free compressor	
	Rubber handle for easy transportation	✓
✓	5-year guarantee against rust and corrosion on vessels	✓
✓	Two pressure gauges for reading the vessel and working pressure	✓



Model	Art. no.	Pressure (bar)	Suction power (l/min)	Inflation performance (l/min)	Drive power (kW)	Voltage (V)	Rotational speed (rpm)	Tank vol. (l)	Weight (kg)	Noise (dB(A)) ¹⁾	Dimensions (WxDxH)
CPM 150-8-6 WOF Base	A202002	8	150	70	1.1	230	2,850	6	11	90	360x300x480
CPM 200-8-10 W Base	A211002	8	150	80	1.1	230	2,850	10	21	95	420x340x620

¹⁾ Sound power level according to DIN EN ISO 3744 (RL 2000/14/EC)

Additional technical features: Equipped with all safety fittings and electric connection cable as standard

CPM 280-10-20 B

- Can be operated independent of mains supply with petrol-driven unit
- Practical handles make it ideal for transportation
- Safety strut for maximum protection of fitting

✓	Close-coupled 1-cylinder piston compressor with petrol engine
✓	Two pressure gauges for vessel and working pressure
✓	Large wheels for maximum drive comfort
✓	10-year rust guarantee on vessels
✓	Easily accessible condensate drain cock



Model	Art. no.	Pressure (bar)	Suction power (l/min)	Inflation performance (l/min)	Drive power (kW)	Voltage (V)	Rotational speed (rpm)	Tank vol. (l)	Weight (kg)	Noise (dB(A)) ¹⁾	Dimensions (WxDxH)
CPM 280-10-20 B	A215000	10	275	165	3	-	3,410	20	36	97	600x490x850

¹⁾ Sound power level according to DIN EN ISO 3744 (RL 2000/14/EC)

Additional technical features: Fully equipped with all the necessary safety fittings

Tip

The CPM 280-10-20 B is not only suitable for construction sites, but is also an ideal addition for breakdown service vehicles.

Genuine professionals for the construction site – the CompactMaster L



Tough and extremely wear-resistant.

Robust protection of all components, large wheels and good ground clearance make the new CompactMaster CPM L reliable partners on the construction site – also at low temperatures.



Easy to transport.

Distinct grip positions and attachment points, coupled with stability and tilt resistance thanks to a low centre of gravity, ensure optimal loading and transport properties.



Orderly system.

With the optional adapter plate Sys-Adapter, Systainers can be quickly and easily combined with the compressor. The tool and accessories are always ready to hand and stowed away safely.

CompactMaster L

Genuine construction site professionals,
high-performance & smooth running



Surrounding steel frame
for optimal protection
of all components



**Optimal loading and
transportation properties**
thanks to distance handle
position and attachment points



**Efficient 1- and
2-cylinder power units**
for applications with
high air requirements



Second air outlet
allows simultaneous use
of two tools



Good ground clearance
thanks to puncture-proof
wheels made from solid
polyurethane material



**Robust design is
ideal for use on
construction sites**



Example: ComapctMaster CPM L 330-10-20 WX

Genuine construction site professionals: The high-performance CompactMaster L are the ideal compressors for tough construction site applications. They impress with their robustness, smooth running and excellent cold start properties, which allow them to also be used at low temperatures. The compressors are also easy to transport and can be combined with Systainers.

Extremely powerful, easy to handle

CompactMaster

CPM L 310 / 330-10-20 WX



- Robust design is ideal for use on construction sites
- Surrounding steel frame provides effective protection for all components
- Optimal loading and transportation properties thanks to distinct handle position and attachment points
- Good cold start properties with additional startup load relieving valve at the pressure switch

✓	Close-coupled 1- or 2-cylinder piston compressor
✓	User-friendly operating panel with two air outlets
✓	Two pressure gauges for vessel and working pressure
✓	Water separator with filter for optimal air quality
✓	4 m cable with rubber sheath and cable hooks
✓	Puncture-resistant wheels made from solid material for high driving comfort
✓	10-year rust guarantee on vessels



Model	Art. no.	Pressure (bar)	Suction power (l/min)	Inflation performance (l/min)	Drive power (kW)	Voltage (V)	Rotational speed (rpm)	Tank vol. (l)	Weight (kg)	Noise (dB(A)) ¹⁾	Dimensions (WxDxH)
CPM L 310-10-20 WX	A223001	10	285	195	1.8	230	2,850	20	41	97	830x560x480
CPM L 330-10-20 WX	A224001	10	300	210	1.8	230	1,450	20	49	95	830x560x480

¹⁾ Sound power level according to DIN EN ISO 3744 (RL 2000/14/EC)

Additional technical features: With all safety fittings, high-quality Condor pressure switch, as well as device supply cable with rubber sheath, as standard

Tip

Particularly quiet and smooth running thanks to the low speed of the CPM L 330-10-20 WX.

Sys-Adapter accessories for CPM L 310 / 330



- Adapter plate for securing Systainers
- Secure interlock with Systainer with folding mechanism

Model	Art. no.
SYS-AP-CPM L	B323431

Extremely powerful, easy to handle

CompactMaster

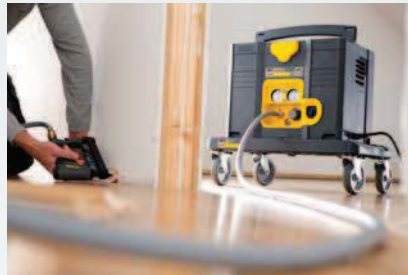


Perfect in a system – the SysMaster compressor



Easy to handle and light.

Weighing only 13 kg and with the option to combine the compressor with a roll board, transporting all components on the construction site is extremely easy and manageable.



Robust.

All fittings are reliably protected by the Systainer. Operation when the Systainer is closed offers complete protection of all parts and reduces the noise level. The SysMaster demonstrates its tough and long-lasting qualities on the construction site.



Combinable.

The SysMaster is compatible with other Systainers. With it you create a perfect transportable system. Thanks to the clever connection you save time by being able to transport more devices at the same time. Compressors, tools and accessories are ready to hand and safely stowed away at all times.



SysMaster

Perfect in a system,
extremely lightweight & unrivalled versatility



Perfect in the system
thanks to combination
with other Systainers



**Outstanding
transportation properties**
thanks to ergonomic handle



**Unrivalled
lightweight design**
at only 13 kg



Extremely robust:
Operating the machine inside
a closed Systainer protects the
sensitive components perfectly
while simultaneously reducing
noise levels



**Simple operation
from exterior**
due to integral operating
panel with quick-action
coupling, pressure reducer,
two pressure gauges and
condensate drainage



Easy to manoeuvre
on the optional roll board

Example: SysMaster SYM 150-8-6 WXOF

Perfect in the system: The combination with other Systainers, excellent transport properties, robustness and optimal operability are the big advantages of the SysMaster! In combination with the roll board the SysMaster makes an optimal partner for mobile applications such as blowing, stapling and nailing or sealing.

SYM 150-8-6 WXOF

SysMaster-Sets

- Perfect in a system: Can be combined with other Systainers
- Easy to carry, only 13 kg
- Extremely robust, components are protected in the Systainer
- Operating panel for easy external operation
- Ergonomic handle and optional roll board for simple transportation



✓	1-cylinder piston compressor	✓
✓	Oil-free, low-maintenance power unit	✓
✓	Two pressure gauges for vessel and working pressure	✓
✓	10-year guarantee against rust and corrosion on vessels	✓
✓	Air outlet via pressure reducer	✓
	In a set with roll board	✓
✓	4 m cable with rubber sheath	✓
	In a set with 2 TL Systainer with AP-Vario-P blowing guns and DLS-SK-SF 15.5–10/10 m (I800025) tube or in a set with 1 TL Systainer with SNG-50 round head nail gun incl. 5000 round head nails and protective goggles (I800027) or in a set with KNG 40/50 SYS combination nail gun, SYS 1 TL Systainer and DLS-SK-SF 11–6.3/10 m superflex tube (I800058).	✓



Model	Art. no.	Pressure (bar)	Suction power (l/min)	Inflation performance (l/min)	Drive power (kW)	Voltage (V)	Rotational speed (rpm)	Tank vol. (l)	Weight (kg)	Noise (dB(A)) ¹⁾	Dimensions (WxDxH)
SYM 150-8-6 WXOF	A911000	8	150	70	1.1	230	2,450	6	13	89	296x396x320
SET SYM 150 AP-RB-DLS	I800025	8	150	70	1.1	230	2,450	6		89	
SET SYM 150 SNG-RB	I800027	8	150	70	1.1	230	2,450	6		89	
SET SYM 150-KNG-RB-DLS	I800058	8	150	70	1.1	230	2,450	6		89	

¹⁾ Sound power level according to DIN EN ISO 3744 (RL 2000/14/EC)

Additional technical features: With all safety fittings, high-quality Condor pressure switch, as well as device supply cable with rubber sheath, as standard

Tip

The SysMaster can be combined with any other Systainers. The compressor, tool and accessories are always stored safely at your fingertips as a result.

Systainer

- Systainer without inlays

Model	Art. no.	Weight (kg)	Internal dimensions (HxWxD) (mm)	Dimensions (WxDxH)
SYS 1 TL	D322500	1.3	75x273x383	296x396x105



Systainer

- Systainer without inlays

Model	Art. no.	Weight (kg)	Internal dimensions (HxWxD) (mm)	Dimensions (WxDxH)
SYS 2 TL	D322501	1.5	127,5x267x383	296x396x157,5



Mini-Systainer

- Can be combined with Mini Systainers only
- Systainer without inlays

Model	Art. no.	Weight (kg)	Internal dimensions (HxWxD) (mm)	Dimensions (WxDxH)
SYS-Mini 1	B323414	0.4	50x248x158	268x171x70



Mini-Systainer

- Can be combined with Mini Systainers only
- Systainer without inlays

Model	Art. no.	Weight (kg)	Internal dimensions (HxWxD) (mm)	Dimensions (WxDxH)
SYS-Mini 2	B323417	0.45	67x248x158	268x171x87



Roll board

Model	Art. no.
RB-SYS TL	B323430

- For easy, effortless transport to the building site, in the workshop and between vehicle and place of use
- Sliding mechanism for secure interlock with Systainers



The intelligent transport and arrangement system

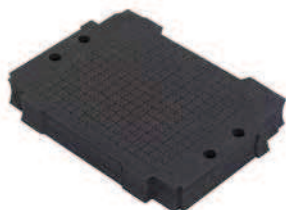
Systainer

Inlays and inserts

Common features

- The various inlays and inserts allow Systainers to be adapted individually to different requirements and applications
- For protection and systematic storage of tools and materials

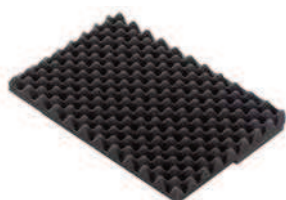
Bottom cushion



- With pre-perforated cubes for individual adaptation to tools and contents of any form

Model	Art. no.
EIL-BP SYS 1-5 - 50mm	B323483

Cover cushion

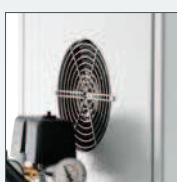


- All contents protected by the burl padding in the cover

Model	Art. no.
EIL-DP SYS 1-5	B323481

SilentMaster

Silent compressors –
when quiet operation is required



Optimal operating temperature
thanks to electric
auxiliary fan



Extremely low-noise
thanks to special sound
insulation cover



Precise work
thanks to two pressure
gauges for reading tank
pressure and
operating pressure



10-year warranty
against rust and corrosion
on vessels



**90 l vessel for
high air requirements**



Ease of transport
thanks to plastic
puncture-proof wheels



Example: SilentMaster SEM 330-10-90 W

The SilentMaster is very silent thanks to its special noise insulation. This portable/mobile compressor series is therefore ideal for applications where silence is required, e.g. when there is no separate room available for the compressor.

SilentMaster

SEM 30-8-4 W



SEM 50-8-9 W



- Extremely quiet due to special noise insulation
- Ideally suited for airbrushing
- Extremely handy thanks to lightweight and compact design

✓	Close-coupled 1-cylinder piston compressor	✓
✓	Stable handle for simple transportation	✓
✓	10-year guarantee against rust and corrosion on vessels	✓
✓	4 large rubber feet for extra stability and ease of transportation	✓
✓	Easily accessible condensate drain cock	✓

Model	Art. no.	Pressure (bar)	Suction power (l/min)	Inflation performance (l/min)	Drive power (kW)	Voltage (V)	Rotational speed (rpm)	Tank vol. (l)	Weight (kg)	Noise (dB(A)) ¹⁾	Dimensions (WxDxH)
SEM 30-8-4 W	A333005	8	30	19	0.2	230	2,900	4	19	31	425x195x430
SEM 50-8-9 W	A333004	8	50	36	0.34	230	2,900	9	22	33	360x360x480

¹⁾ LpA4 sound pressure level at distance of 4 m

Additional technical features: With all safety fittings, high-quality Condor pressure switch, as well as 2 m device supply cable with rubber sheath, as standard

Tip

The duty cycle must not exceed 50 % due to the subsequent generation of heat in the special encapsulated power unit.

SEM 110-8-6 WOF

NEW

SEM 210-8-6 WOF

- Reduced noise with sound absorbing cover
- Low maintenance thanks to oil-free compressor
- Extremely handy thanks to lightweight and compact design



✓	Close-coupled 1-cylinder piston compressor	✓
✓	Integral handle for simple transportation	✓
✓	10-year guarantee against rust and corrosion on vessels	✓
	Air outlet via pressure reducer	✓
✓	Air outlet via filter pressure reducer	
✓	Two pressure gauges for vessel and working pressure	✓



Model	Art. no.	Pressure (bar)	Suction power (l/min)	Inflation performance (l/min)	Drive power (kW)	Voltage (V)	Rotational speed (rpm)	Tank vol. (l)	Weight (kg)	Noise (dB(A)) ¹⁾	Noise (dB(A)) ²⁾	Dimensions (WxDxH)
SEM 110-8-6 WOF	A311001	8	105	68	0.75	230	1,450	6	18	65	85	430x210x430
SEM 210-8-6 WOF	A313000	8	210	120	1.1	230	2,850	6	23	65	85	600x270x570

¹⁾ LpA4 sound pressure level at distance of 4 m ²⁾ Sound power level according to DIN EN ISO 3744 (RL 2000/14/EC)

Technische Zusatzmerkmale: Serienmäßig mit allen Sicherheitsarmaturen, hochwertigem Druckschalter sowie 2 m Geräteleitung mit Gummiummantelung

Tip

An oil-free compressor reduces maintenance and does not generate compressed air that contains impure oil from the compressor.

When quiet operation is required

SilentMaster

SEM 255-10-50 W

NEW

SEM 330-10-90 W

- Reduced noise with sound absorbing cover
- Low noise level at installation site
- 50 or 90 l vessel for high air requirements



✓	Close-coupled 1- or 2-cylinder piston compressor	✓
✓	10-year guarantee against rust and corrosion on vessels	✓
✓	Air outlet via filter pressure reducer	✓
✓	Two pressure gauges for vessel and working pressure	✓
	Electric auxiliary fan prevents unit from overheating	✓



Model	Art. no.	Pressure (bar)	Suction power (l/min)	Inflation performance (l/min)	Drive power (kW)	Voltage (V)	Rotational speed (rpm)	Tank vol. (l)	Weight (kg)	Noise (dB(A)) ¹⁾	Noise (dB(A)) ²⁾	Dimensions (WxDxH)
SEM 255-10-50 W	A333001	10	255	165	1.5	230	2,850	50	56	67	87	1,000x390x770
SEM 330-10-90 W	A316000	10	300	210	1.8	230	1,450	90	87	66	87	1,030x520x1,020

¹⁾ LpA4 sound pressure level at distance of 4 m ²⁾ Sound power level according to DIN EN ISO 3744 (RL 2000/14/EC)

Additional technical features: With all safety fittings, high-quality Condor pressure switch, as well as 2 m device supply cable with rubber sheath, as standard

Tip

The water separator with filter at the pressure reducer reduces dirt particles, condensate and oil in the compressed air, thus increasing the service life of pneumatic tools.

You can count on us – Guaranteed!



With our 1+2 warranty, we offer a three year warranty for selected mobile compressors and pneumatic tools following online registration of the purchased product.

If you or a dealer you nominate registers your Schneider product online within 30 days of purchase, we will give you a 3-year warranty from the date of purchase on a product from the current sales portfolio.

www.schneider-airsystems.com

