

Hammers, Breakers & Rock drills

TOKU HAMMERS FOR HEAVY IMPACT



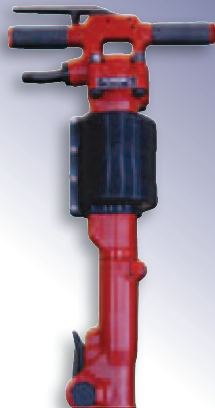
- High quality Japanese steel
- Perfect heat treatment for best hardness
- Personal care, as quality is first in mind for all TOKU employees

TOKU 

Breakers- & rock drills



TCD-20



TPB-40



TPB-40SV



TPB-501SV



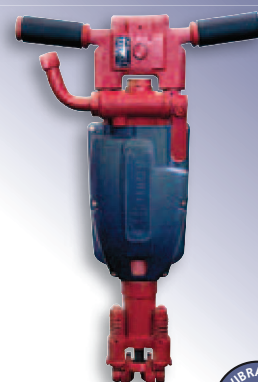
TPB-60



TH-5S



TJ-20SV LBS
TJ-20SV SBS



TJ-15SV LBS
TJ-15SV SBS



Paving breakers

Type	Shank size mm	Bore diameter mm	Stroke mm	Blows p/min	J/Blow	Air cons. l/s	Weight kg	Inlet-thread	Hose diameter mm	Vibration m/s ²	Noise level dB(A)
TCD-20	○ 22 x 82	43	60	2.000	42,4	18,0	11,4	PT 1/2"	13	16	106
TPB-40	○ 25 x 108	44	146	1.400	110	26	19	PT 3/4"	19	19,1	106
TPB-40SV ¹⁾	○ 25 x 108	40	146	1.050	110	26	19,5	PT 3/4"	19	5,5	106
TPB-501SV ¹⁾	○ 32 x 160	50	156	1.250	151	25	28,1	PT 3/4"	19	5,3	107
TPB-60	○ 32 x 160	57	100	1.400	125	27	30	PT 3/4"	19	9,7	110

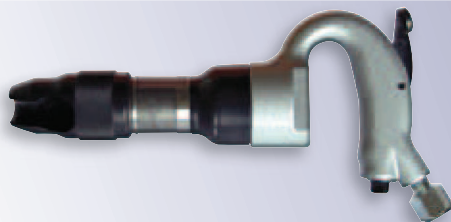
¹⁾ Vibration reduced

Rock drills

Type	Shank size mm	Bore diameter mm	Stroke mm	Blows p/min	RPM	J/Blow	Air cons. l/s	Weight kg	Inlet-thread	Hose diameter mm	Vibration m/s ²	Noise level dB(A)
TH-5S ¹⁾	○19 x ○14,8 x 89	38	31	3.400	420	17	14	5,8	PT 3/8"	13	14	95
TJ-15SV LBS ¹⁾	○ 22 x 108	54	45	2.450	250	44,7	26	17,7	PT 3/4"	19	7,0	99
TJ-15SV SBS ¹⁾	○ 22 x 82	54	45	2.450	250	44,7	26	17,4	PT 3/4"	19	7,0	99
TJ-20SV LBS ¹⁾	○ 22 x 108	68	49	2.400	200	72	41	19	PT 3/4"	19	10,8	100
TJ-20SV SBS ¹⁾	○ 22 x 82	68	49	2.400	200	72	41	19	PT 3/4"	19	10,8	100

¹⁾ Vibration reduced

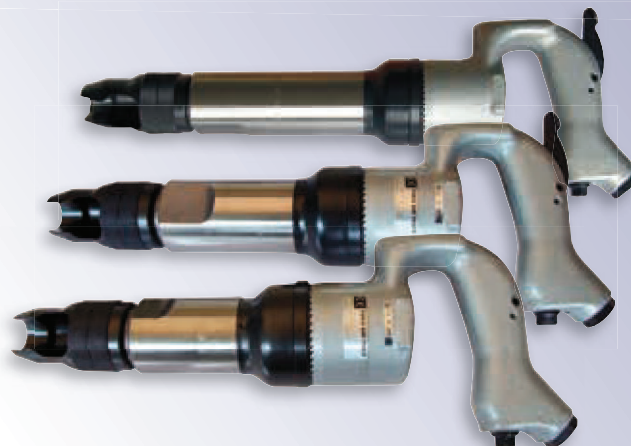
Hammers



AA-OBR(H)



AA-1.3BR(H)19x50



THA-2BRH19x50 / THA-3BRH19x50 / THA-4BRH19x50

Type	Shank size mm	Bore diameter mm	Stroke mm	Blows p/min	J/Blow	Air cons. l/s	Weight kg	Inlet thread	Hose diameter mm	Vibration m/s ²	Noise level dB(A)
AA-OBR(H)	○ 12,7 x ○ 15 x 53	20	50	3.600	7,5	5,8	2,6	PT 3/8"	6,5	12	89
AA-1.3BR(H)19x50 ¹⁾	○ 19 x 50	24	58	2.800	12,7	7,5	4,5	PT 3/8"	10	10	93
THA-2BRH19x50	○ 19 x 50	28,5	51	2.300	15,7	14,2	6,8	PT 3/8"	13	11,6	93
THA-3BRH19x50	○ 19 x 50	28,5	64	2.200	19,9	15	7,2	PT 3/8"	13	8	93
THA-4BRH19x50	○ 19 x 50	28,5	102	1.800	31,8	15,8	7,8	PT 3/8"	13	11,6	93

¹⁾ Shank size ○ 14,8 x ○ 17,5 x 60 on request



Low vibration

The TOKU vibration reduced hammers allows the operator to work for extended time.



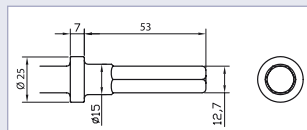
AA-OBR(H)



AA-1.3BR(H)19x50

Chisels for air hammers

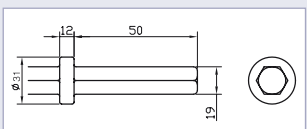
Shank size 12,7 mm Hex / Ø 15 mm x 53 mm



FOR HAMMERS
- Toku AA-OB
- Toku AA-OB(RH)

Ordernumber	Description	L (mm) total	B (mm)
BEAA-OB-01	Flat chisel	220	16
BEAA-OB-01 400mm	Flat chisel	400	16
BEAA-OB-02	Diamond point	220	-
BEAA-OB-02 400mm	Diamond point	400	-
BEAA-OB-03	Flat chisel	220	25
BEAA-OB-04	Flat chisel	220	49
BEAA-OB-05	Flat chisel	220	97
BEAA-OB-06	Flat chisel bent	220	50

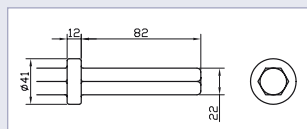
Shank size 19 mm Hex x 50 mm



FOR HAMMERS
- Toku AA-1.3BR(H) 19x50
- Toku AA-3BR(H) 19x50
- Toku THA-Serie

Ordernumber	Description	L (mm) under the collar	B (mm)
MP5	Moil point	250	-
MP5-350	Moil point	350	-
MP5-450	Moil point	450	-
NC5	Flat chisel	250	30
NC5-350	Flat chisel	340	30
NC5-450	Flat chisel	440	30
CB5	Wide flat chisel	250	60
CB5-G	Wide flat chisel, bent	250	60
CB19210	Wide flat chisel	210	95

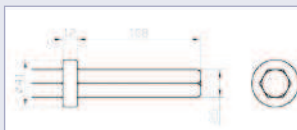
Shank size 22 mm Hex x 82,5 mm



FOR HAMMERS
- Toku TCD-20
- Red Rooster RRI-4596/1
- Red Rooster RRI-4612K VL

Ordernumber	Description	L (mm) under the collar	B (mm)
MP4	Moil point	380	-
MP4-450	Moil point	450	-
MP4-1000	Moil point	1.000	-
MP4-1500	Moil point	1.500	-
MP4-2000	Moil point	2.000	-
NC4	Flat chisel	380	25
NC4-450	Flat chisel	450	25
NC4-1000	Flat chisel	1.000	25
NC4-1500	Flat chisel	1.500	25
NC4-2000	Flat chisel	2.000	25
CB4	Wide flat chisel	380	75
DC4	Digging chisel	400	75
AC4	Asphalt cutter	400	125

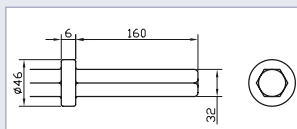
Shank size 25 mm Hex x 108 mm



FOR HAMMERS
- Toku TPB-40
- Toku TPB-40SV

Ordernumber	Description	L (mm) under the collar	B (mm)
MP3	Moil point	380	-
MP3-450	Moil point	450	-
MP3-600	Moil point	600	-
MP3-1500	Moil point	1.500	-
MP3-2000	Moil point	2.000	-
NC3	Flat chisel	380	25
NC3-450	Flat chisel	450	25
CB3	Wide flat chisel	360	75
DC3	Digging chisel	400	75
AC3	Asphalt cutter	400	125

Shank size 32 mm Hex x 160 mm



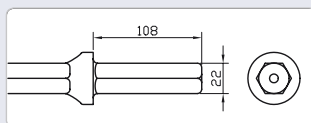
FOR HAMMERS
- Toku TPB-50N
- TokuTPB-501SV
- TPB-60

Ordernumber	Description	L (mm) under the collar	B (mm)
MP1A	Moil point	380	-
MP1	Moil point	450	-
MP1-900	Moil point	900	-
MP1-1500	Moil point	1.500	-
NC1A	Flat chisel	380	35
NC1	Flat chisel	450	35
CB1A	Wide flat chisel	380	75
DC1	Digging chisel	400	75
AC1	Heavy asphalt cutter	270	115
CB5019	Asphalt cutter	350	125
E1	Tagger plate shank	350	-
CB912905	Tamper plate	-	Ø 125
CB912906	Tamper plate	-	Ø 180



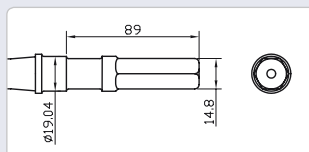
Drills for air hammers

Drill bars shank 22 mm Hex x 108 mm, Konus II for hammers - **Toku TJ-15LBS / TJ-20LBS**



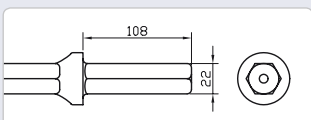
Ordernumber	L (mm) total	Ø (mm)
CB2261510500	500	-
CB2261510800	800	-
CB2261511000	1000	-
CB2261511500	1500	-
CB2261512000	2000	-
CB2261512500	2500	-

Monobloc-drills shank 14.8 mm Hex x 89 mm combi for hammers **TH-5S**



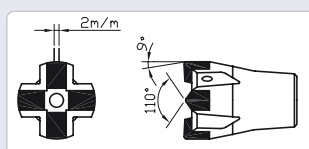
Ordernumber	L (mm) total	Ø (mm)
CB9F25016	250	16
CB9F25018	250	18
CB9F25019	250	19
CB9F35016	350	16
CB9F35019	330	19

Monobloc-drills shank 22 mm Hex x 108 mm for hammers - **Toku TJ-15LBS / TJ-20LBS**

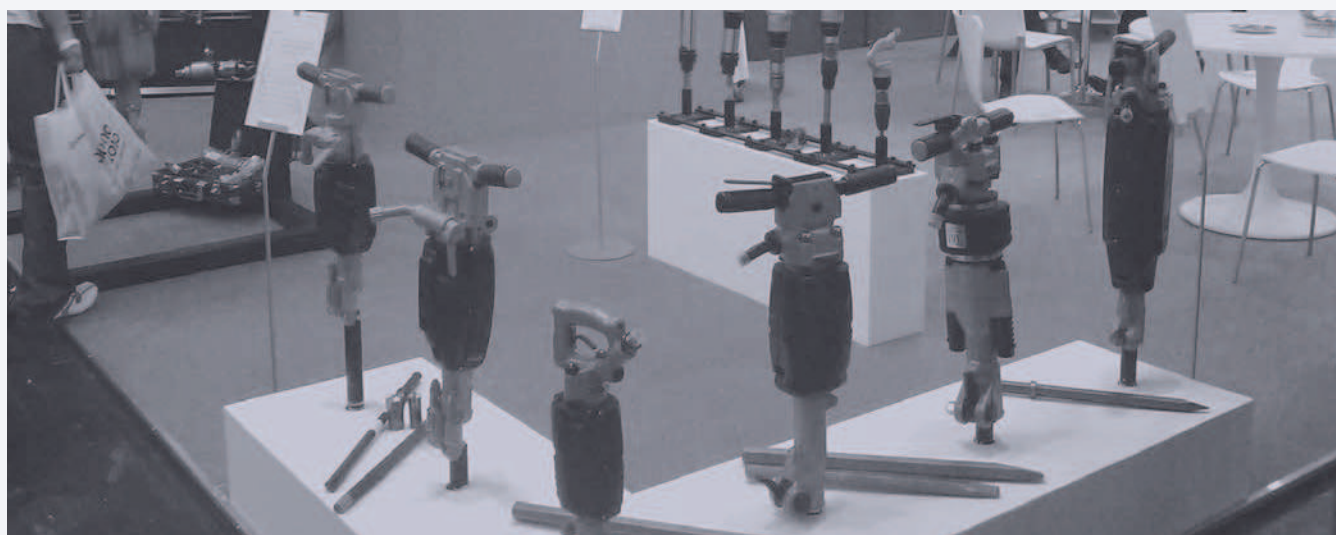


Ordernumber	L (mm) total	Ø (mm)
CB2240016	400	16
CB2260016	600	16
CB2240019	400	19
CB2260019	600	19
CB22100019	1000	19
CB2230022	300	22
CB2240022	400	22
CB2260022	600	22
CB22100022	1000	22
CB2240025	400	25
CB2260025	600	25
CB22100025	1000	25
CB2260028	600	28
CB2260030	600	30

Drill bit crossheads, Konus II



Ordernumber	L (mm) total	Ø (mm)
CB6126300030	-	30
CB6126300032	-	32
CB6126300034	-	34
CB6126300036	-	36
CB6126300038	-	38
CB6126300040	-	40
CB6126300045	-	45
CB6126300050	-	50
CB6126300055	-	55



TOKU = TOP QUALITY



5 plants which support the quality of Toku Products, Operating on the basis of a self supporting system, each factory is searching to manufacture high quality products efficiently with shorter delivery times. These products are manufactured using the most updated facilities of CNC machines and CAD systems with a high degree of engineering experience which Toku products are relied upon around the world. Since 1997, Toku has been making efforts to obtain ISO-9001 and ISO-9002. These strong efforts to control product quality is included in each item we manufacture today.



SAGA MAIN PLANT

This is Toku's main plant where air tools are manufactured for the construction and general industry. Each manufacturing process is performed in the most efficient manner by utilizing manufacturing lines. In addition, the most updated facilities of CNC and CAD equipment is used to manufacture high quality products. The product showroom is also a part of the main plant. The Headquarters facilities are also located in this plant.



KAMIMINE

Kamimine plant consists of 2 plants. Minobaru plant and Fukuoka plant. Both plants are equipped with the most advanced automated equipment using production lines to manufacture products. Minobaru plant exclusively manufactures hydraulic equipment, mainly hydraulic breakers. Fukuoka plant specializes in manufacturing larger volumes of Impact wrenches.



HIROKAWA

Hirokawa plant was founded in 1991. This Plant is equipped with the most advanced facilities. The entire plant is climate controlled in order to proceed with higher levels of quality control. The plant is an exclusive manufacturer of parts. This Plant has obtained the International standard of quality control "ISO-9002" in 1997.



KISHIMA

The plant mainly manufactures larger size impact wrenches and grinders. This is also a very important plant in the Toku system. The plant is equipped with many advanced CNC machining centers, and Automated Line production is aggressively pursued in this plant.

KIYAMA

The Kiyama plant was in 2011 inaugurated for the production of plastic composite parts.

TESTING AND QUALITY

By performing proper product testing, quality can be maintained. Establishing this type of total production quality control system of manufacturing has led to reduce in cost and shorter delivery schedules to develop high quality products. Also, in order to perform a stable delivery schedule of Toku products, we have established an efficient system within the company to receiving orders and arrange deliveries quickly and effectively. The products manufactured at the factory are warehoused at our product center, to be delivered to a domestic distributor or exported for international distribution. By establishing this type of efficient product flow system, we can save in overall cost.

