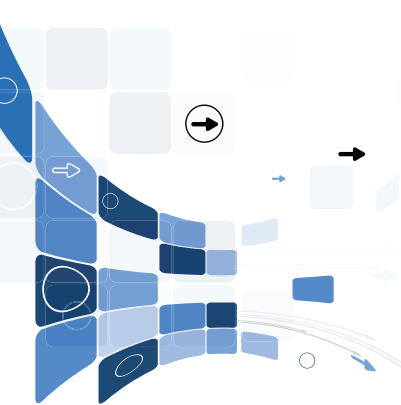


## New Product Catalogue

---





Introduction	2
10 Good Reasons	3
<b>DIE GRINDER</b>	4
Turbine Pencil Grinder	5
Pencil Grinder	6
High Speed Die Grinder	7
Low Vibration Die Grinder	12
Extended Spindle Die Grinder	13
Extended Body Die Grinder	15
Horizontal Die Grinder	16
<b>GRINDER</b>	17
Medium angle Grinder	18
Large Angle Grinder	20
<b>SANDER</b>	21
Small Angle Sander	22
Medium Angle Sander	24
Low Speed Sander	26
Low Speed Polisher	28
<b>BELT SANDER</b>	31
Belt Sander	32
<b>ACCESSORIES</b>	34
<b>MAINTENANCE</b>	40
<b>NOTES</b>	41

## WHY SELECT ata tools

With over 50 years experience, ATA is a global leader in the provision of high end industrial air tools. Our comprehensive portfolio offers a solution for every grinding and finishing application, optimizing processes in terms of economic efficiency, reliability and safety. Our customers come from a wide variety of industries, including automotive, aerospace, foundries, metal fabrication, oil & gas, marine, medical, railway and power & energy.

## DEDICATED TO QUALITY ata tools

Quality and continuous improvement is a priority at ATA. We strive for exemplary quality in our products and services. In the procurement of goods and services, we look for partnerships with suppliers that apply the same principles of quality assurance. Our management system is based on ISO 9001.

## INNOVATION FROM DAY ONE ata tools

Founded in 1963, ATA was a true pioneer in industrial air tools. Since then we have continued to convince our customers with products and solutions. Our industrial expertise and detailed application know-how leads, time and again to pioneering developments.



Wear  
Protective  
Goggles



Wear  
Protective  
Mask



Wear Ear  
Protection



Replacement  
Motor



Oil



Oil Free



Low Noise



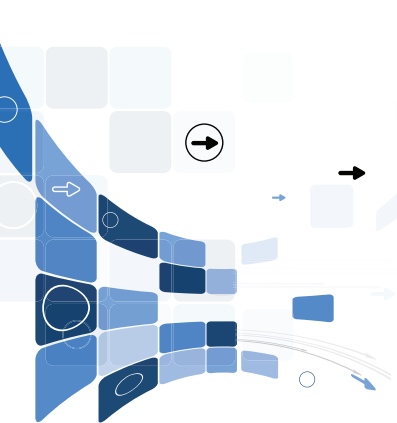
Low Vibration



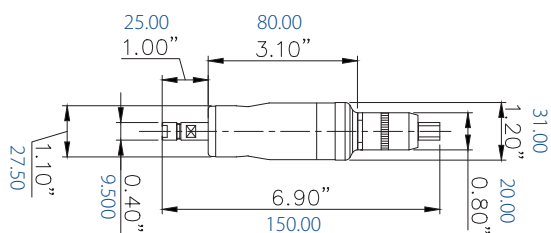


**DIE GRINDER**





## DIE GRINDER Turbine Pencil Grinder - ST100



Model	ST100
Speed (rpm)	100,000
Power (hp)	0.06
Power (Watt)	40
Weight (Kg)	0.24
Weight (lb)	0.53
Air consumption (m3/min)	0.17
Air consumption (cfm)	6.00
Noise level (db.(A))	62
Standard Collet Size Metric	3
Collet Options - Metric	2.34mm
Standard Collet Size - Imperial	1/8"
Collet Options - Imperial	3/32"
Exhaust type	Front
Lever type	Roll
Recommended Consumables	
Tungsten Carbide Burs	3mm - 1/8"
Abrasives	Mounted points

### FEATURES & BENEFITS

- Oil free-No contamination
- High speed-Fine finish
- Small diameter facilitates precise control
- Minimal tools required for stripping
- Ergo sleeve fitted for operator comfort



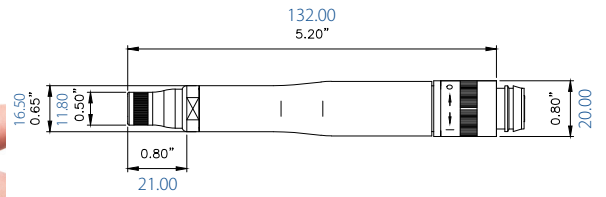
Accessories	Part Number
Spanner	25510100
Hose	17701020



### Ordering Information

For more information and / or to place an order, please contact ATA Customer Service Internationally +353 (0) 49 432 6178 or by email [sales@atagroup.ie](mailto:sales@atagroup.ie) or the UK +44 (0) 1530 261 145, email [sales@atagroupuk.com](mailto:sales@atagroupuk.com)

## DIE GRINDER Pencil Grinder - SP Line



Model	SP75R	SP60R	SP45R
Speed (rpm)	75,000	60,000	45,000
Power (hp)	0.15	0.15	0.20
Power (Watt)	110	110	110
Weight (Kg)	0.15	0.15	0.15
Weight (lb)	0.33	0.33	0.33
Air consumption (m3/min)	0.20	0.20	0.20
Air consumption (cfm)	7.06	7.06	7.06
Noise level (db.(A))	66	63	60
Standard collet (mm)	3	3	3
Collet options (mm)	2.34mm	2.34mm	2.34mm
Standard collet (")	1/8"	1/8"	1/8"
Collet options (")	3/32"	3/32"	3/32"
Exhaust type	Rear	Rear	Rear
Lever type	Roll	Roll	Roll

### FEATURES & BENEFITS

- Slim body design-for intricate work
- High speed-fine finish
- Small diameter facilitates precise control
- Removable collet guard
- Collet guard for improved control & spindle protection



Recommended Consumables	
Tungsten Carbide Burs	3mm - 1/8"
Abrasives	Mounted points



Accessories	Part Number
Spanner	25510100
Hose	17701020
Over hose	17710620
Hose Set	17701220

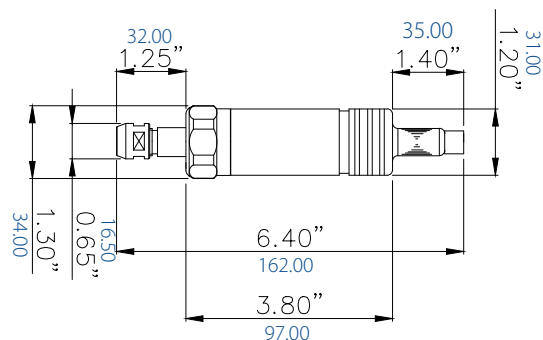


### Ordering Information

For more information and / or to place an order, please contact  
ATA Customer Service Internationally +353 (0) 49 432 6178 or  
by email [sales@atagroup.ie](mailto:sales@atagroup.ie) or the UK +44 (0) 1530 261 145,  
email [sales@atagroupuk.com](mailto:sales@atagroupuk.com)



## DIE GRINDER High Speed Grinder S50



Model	S50
Speed (rpm)	50,000
Power (hp)	0.25
Power (Watt)	190
Weight (Kg)	0.36
Weight (lb)	0.79
Air consumption (m3/min)	0.45
Air consumption (cfm)	15.89
Noise level (db(A))	70
Standard Collet Size Metric	6
Collet Options - Metric	3
Standard Collet Size - Imperial	1/4"
Collet Options - Imperial	1/8"
Exhaust type	Front
Lever type	Push pull
<b>Recommended Consumables</b>	
Tungsten Carbide Burs	3 to 8mm - 1/8" to 5/16"
Abrasives	Mounted points

### FEATURES & BENEFITS

- Compact design for heavy deburring
- Push pull throttle for continuous running
- Powerful motor for grinding and polishing



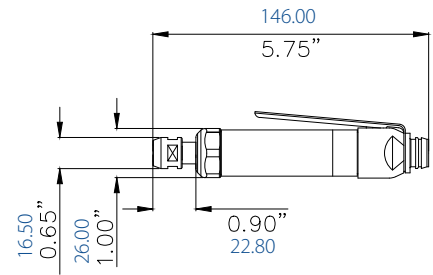
Accessories	Part Number
Spanner	25546200
Spanner	25561110
Hose	17731420
Over hose	17794520
Hose Set	17711020



### Ordering Information

For more information and / or to place an order, please contact ATA Customer Service Internationally +353 (0) 49 432 6178 or by email [sales@atagroup.ie](mailto:sales@atagroup.ie) or the UK +44 (0) 1530 261 145, email [sales@atagroupuk.com](mailto:sales@atagroupuk.com)

## DIE GRINDER High Speed Die Grinder - SD45LR



Model	SD45LR
Speed (rpm)	45,000
Power (hp)	0.20
Power (Watt)	150
Weight (Kg)	0.24
Weight (lb)	0.53
Air consumption (m3/min)	0.23
Air consumption (cfm)	8.12
Noise level (db.(A))	64
Standard Collet Size Metric	6
Collet Options - Metric	3
Standard Collet Size - Imperial	1/4"
Collet Options - Imperial	1/8"
Exhaust type	Rear
Lever type	Simple lever
Recommended Consumables	
Tungsten Carbide Burs	3 to 8mm - 1/8" to 5/16"
Abrasives	Mounted points

### FEATURES & BENEFITS

- Powerful for digging out defects
- Simple lever operation best for where use is not continuous
- Ergo sleeve fitted for operator comfort



Accessories	Part Number
Spanner	25546200
Spanner	25561110
Hose	17701020
Over hose	17710620
Hose Set	17701220

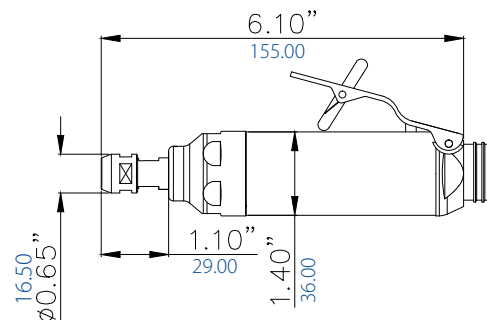


### Ordering Information

For more information and / or to place an order, please contact  
ATA Customer Service Internationally +353 (0) 49 432 6178 or  
by email [sales@atagroup.ie](mailto:sales@atagroup.ie) or the UK +44 (0) 1530 261 145,  
email [sales@atagroupuk.com](mailto:sales@atagroupuk.com)



## DIE GRINDER High Speed Die Grinder - SD Line



Model	SD37L	SD30L	SD26L	SD37LR	SD30LR	SD26LR
Speed (rpm)	37,000	30,000	25,000	37,000	30,000	25,000
Power (hp)	0.40	0.40	0.40	0.40	0.40	0.40
Power (Watt)	300	300	300	300	300	300
Weight (Kg)	0.46	0.46	0.46	0.46	0.46	0.46
Weight (lb)	1.01	1.01	1.01	1.01	1.01	1.01
Air consumption (m3/min)	0.57	0.57	0.57	0.57	0.57	0.57
Air consumption (cfm)	20.13	20.13	20.13	20.13	20.13	20.13
Noise level (db.(A))	75	73	72	74	73	72
Standard collet (mm)	6	6	6	6	6	6
Collet options (mm)	3	3	3	3	3	3
Standard collet (")	1/4"	1/4"	1/4"	1/4"	1/4"	1/4"
Collet options (")	1/8"	1/8"	1/8"	1/8"	1/8"	1/8"
Exhaust type	Front	Front	Front	Rear	Rear	Rear
Lever type	Safety lever	Safety lever	Safety lever	Safety lever	Safety lever	Safety lever

Recommended Consumables	
Tungsten Carbide Burs	3mm to 12mm - 1/8" to 1/2"
Abrasives	Mounted points



Accessories	Part Number
Spanner	25546200
Spanner	25561110
Hose	17731420
Over hose	17794520
Hose Set	17711020

### FEATURES & BENEFITS

- Excellent power/weight ratio
- Used for general de-burring, grinding & polishing
- Compact design suitable for light to medium de-burring applications
- Ergo sleeve fitted for operator comfort



### Ordering Information

For more information and / or to place an order, please contact  
ATA Customer Service Internationally +353 (0) 49 432 6178 or  
by email [sales@atagroup.ie](mailto:sales@atagroup.ie) or the UK +44 (0) 1530 261 145,  
email [sales@atagroupuk.com](mailto:sales@atagroupuk.com)

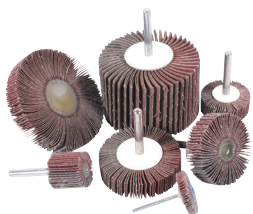


## DIE GRINDER High Speed Die Grinder - P25/2



Model	P25/2
Speed (rpm)	25,000
Power (hp)	0.50
Power (Watt)	375
Weight (Kg)	0.60
Weight (lb)	1.32
Air consumption (m3/min)	0.60
Air consumption (cfm)	21.19
Noise level (db.(A))	80
Standard Collet Size Metric	6
Collet Options - Metric	3, 8 & 10
Standard Collet Size - Imperial	1/4"
Collet Options - Imperial	1/8", 3/8"
Exhaust type	Front
Lever type	Safety lever

Recommended Consumables	
Tungsten Carbide Burs	10 & 12mm - 3/8" & 1/2"
Abrasives	Mounted points/Flap wheels/Bands



Accessories	Part Number
Spanner	25561210
Spanner	25561110
Hose	17731420
Over house	17794520
Hose Set	17711020



### FEATURES & BENEFITS

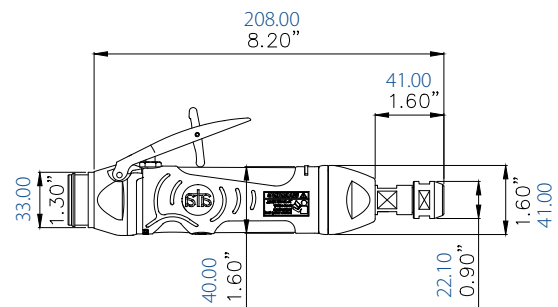
- Excellent power/weight ratio
- One handed operation suitable for general de burring
- Compact design suitable for light to medium de burring applications



### Ordering Information

For more information and / or to place an order, please contact  
ATA Customer Service Internationally +353 (0) 49 432 6178 or  
by email [sales@atagroup.ie](mailto:sales@atagroup.ie) or the UK +44 (0) 1530 261 145,  
email [sales@atagroupuk.com](mailto:sales@atagroupuk.com)

## DIE GRINDER High Power Die Grinder - SM Line



Model	SM25L-CA	SM16L-CA	SM10L-CA	SM25LR-CA	SM16LR-CA	SM10LR-CA
Speed (rpm)	25,000	16,000	10,000	25,000	16,000	10,000
Power (hp)	1.10	1.10	1.10	1.10	1.10	1.10
Power (Watt)	820	820	820	820	820	820
Weight (Kg)	0.75	0.75	0.75	0.73	0.73	0.73
Weight (lb)	1.65	1.65	1.65	1.61	1.61	1.61
Air consumption (m3/min)	0.62	0.62	0.62	0.62	0.62	0.62
Air consumption (cfm)	21.89	21.89	21.89	21.89	21.89	21.89
Noise level (db.(A))	74	77	78	74	75	77
Standard collet (mm)	6	6	6	6	6	6
Collet options (mm)	3,8,10	3,8,10	3,8,10	3,8,10	3,8,10	3,8,10
Standard collet (")	1/4"	1/4"	1/4"	1/4"	1/4"	1/4"
Collet options (")	1/8", 3/8"	1/8", 3/8"	1/8", 3/8"	1/8", 3/8"	1/8", 3/8"	1/8", 3/8"
Exhaust type	Front	Front	Front	Rear	Rear	Rear
Lever type	Safety lever	Safety lever	Safety lever	Safety lever	Safety lever	Safety lever

Recommended Consumables	
Tungsten Carbide Burs	12 & 15mm - 1/2" & 9/16"
Abrasives	Mounted points/ Flap wheels/ Bands



Accessories	Part Number
Spanner	25561210
Spanner	25500510
Hose	17712120
Over hose	17795020
Hose Set	17711020

### FEATURES & BENEFITS

- Motor - more power less consumption
- Throttle valve for smoother start up action
- New moulded sleeve for improved ergonomics  
- operator comfort & insulation
- Ergonomically designed lever construction



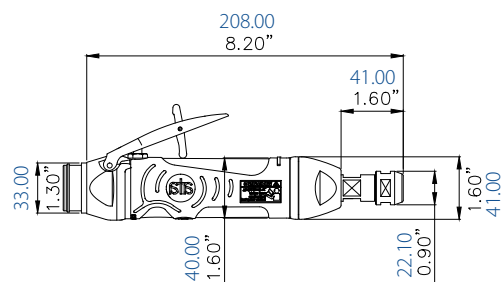
### Ordering Information

For more information and / or to place an order, please contact  
ATA Customer Service Internationally +353 (0) 49 432 6178 or  
by email [sales@atagroup.ie](mailto:sales@atagroup.ie) or the UK +44 (0) 1530 261 145,  
email [sales@atagroupuk.com](mailto:sales@atagroupuk.com)





## DIE GRINDER Low Vibration Die Grinder - SMD Line



Model	SMD25LR-CA	SMD18LR-CA
Speed (rpm)	25,000	18,000
Power (hp)	1.10	1.10
Power (Watt)	820	820
Weight (Kg)	0.80	0.80
Weight (lb)	1.76	1.76
Air consumption (m3/min)	0.62	0.62
Air consumption (cfm)	21.89	21.89
Noise level (db(A))	77	75
Standard collet (mm)	6	6
Collet options (mm)	3,8,10	3,8,10
Standard collet (")	1/4"	1/4"
Collet options (")	1/8", 3/8"	1/8", 3/8"
Exhaust type	Rear	Rear
Lever type	Safety lever	Safety lever

### FEATURES & BENEFITS

- Unique anti-vibration dampening system
- Throttle valve for smoother start up action
- Moulded sleeve for improved ergonomics - operator comfort & insulation
- Ergonomically designed lever construction
- Governor design offering a range of speeds



Recommended Consumables	
Tungsten Carbide Burs	12 to 15mm / 1/2" to 9/16"



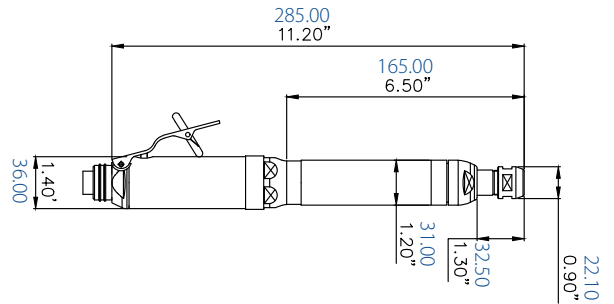
Accessories	Part Number
Spanner	25561210
Spanner	25500510
Hose	17712120
Over hose	17795020



### Ordering Information

For more information and / or to place an order, please contact  
ATA Customer Service Internationally +353 (0) 49 432 6178 or  
by email [sales@atagroup.ie](mailto:sales@atagroup.ie) or the UK +44 (0) 1530 261 145,  
email [sales@atagroupuk.com](mailto:sales@atagroupuk.com)

## DIE GRINDER Extended Spindle Die Grinder - SDX Line



Model	SDX37LR	SDX30LR	SDX26LR
Speed (rpm)	37,000	30,000	25,000
Power (hp)	0.40	0.40	0.40
Power (Watt)	300	300	300
Weight (Kg)	0.80	0.80	0.80
Weight (lb)	1.76	1.76	1.76
Air consumption (m3/min)	0.57	0.57	0.57
Air consumption (cfm)	20.13	20.13	20.13
Noise level (db.(A))	74	73	72
Standard collet (mm)	6	6	6
Collet options (mm)	3,8,10	3,8,10	3,8,10
Standard collet (")	1/4"	1/4"	1/4"
Collet options (")	1/8", 3/8"	1/8", 3/8"	1/8", 3/8"
Exhaust type	Rear	Rear	Rear
Lever type	Safety lever	Safety lever	Safety lever

### FEATURES & BENEFITS

- Double handed-for comfort /control & precision
- Excellent power/weight ratio
- Two handed grip gives good control over the process
- Suitable for a range of light grinding applications
- Ergo sleeves fitted for operator comfort



Recommended Consumables	
Tungsten Carbide Burs	3mm to 12mm - 1/8" to 1/2"
Abrasives	Mounted points/Flap wheels/Bands



Accessories	Part Number
Spanner	25561210
Spanner	25561110
Hose	17712120
Over hose	17794520
Hose Set	14411420

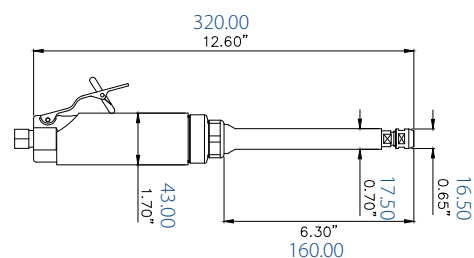


### Ordering Information

For more information and / or to place an order, please contact  
ATA Customer Service Internationally +353 (0) 49 432 6178 or  
by email [sales@atagroup.ie](mailto:sales@atagroup.ie) or the UK +44 (0) 1530 261 145,  
email [sales@atagroupuk.com](mailto:sales@atagroupuk.com)



## DIE GRINDER Extended Spindle Die Grinder - SX Line



Model	SX22LR	SX16LR	SX10LR
Speed (rpm)	22,000	16,000	10,000
Power (hp)	0.85	0.85	0.85
Power (Watt)	630	630	630
Weight (Kg)	1.17	1.17	1.17
Weight (lb)	2.57	2.57	2.57
Air consumption (m3/min)	0.85	0.85	0.85
Air consumption (cfm)	30.01	30.01	30.01
Noise level (db.(A))	70	65	64
Standard collet (mm)	6	6	6
Collet options (mm)	3,8,10	3,8,10	3,8,10
Standard collet (")	1/4"	1/4"	1/4"
Collet options (")	1/8", 3/8"	1/8", 3/8"	1/8", 3/8"
Exhaust type	Rear	Rear	Rear
Lever type	Safety lever	Safety lever	Safety lever

### FEATURES & BENEFITS

- Extended spindle for access in restricted areas
- Small diameter spindle for restricted access applications
- Spindle protected from work piece by spindle housing
- Ergo sleeve fitted for operator comfort



Recommended Consumables	
Tungsten Carbide Burs	15 to 20mm 9/16" to 13/16"
Abrasives	Mounted points



Accessories	Part Number
Spanner	25561110
Spanner	25546210
Hose	17731420
Over hose	17794520
Hose Set	17711020

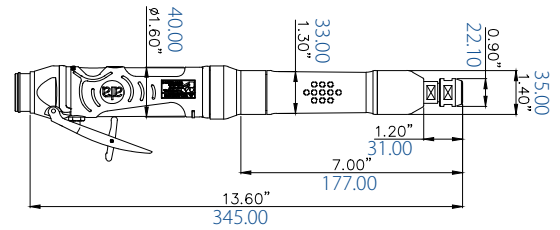


### Ordering Information

For more information and / or to place an order, please contact  
ATA Customer Service Internationally +353 (0) 49 432 6178 or  
by email [sales@atagroup.ie](mailto:sales@atagroup.ie) or the UK +44 (0) 1530 261 145,  
email [sales@atagroupuk.com](mailto:sales@atagroupuk.com)



## DIE GRINDER Extended Body Die Grinder - SMX Line



Model	SMX25L	SMX16L	SMX10L	SMX25LR	SMX16LR	SMX10LR
Speed (rpm)	25,000	16,000	10,000	25,000	16,000	10,000
Power (hp)	1.10	1.10	1.10	1.10	1.10	1.10
Power (Watt)	820	820	820	820	820	820
Weight (Kg)	1.30	1.30	1.30	1.30	1.30	1.30
Weight (lb)	2.86	2.86	2.86	2.86	2.86	2.86
Air consumption (m3/min)	0.62	0.62	0.62	0.62	0.62	0.62
Air consumption (cfm)	21.89	21.89	21.89	21.89	21.89	21.89
Noise level (db(A))	78	77	74	77	75	74
Standard collet (mm)	6	6	6	6	6	6
Collet options (mm)	3,8,10	3,8,10	3,8,10	3,8,10	3,8,10	3,8,10
Standard collet (")	1/4"	1/4"	1/4"	1/4"	1/4"	1/4"
Collet options (")	1/8", 3/8"	1/8", 3/8"	1/8", 3/8"	1/8", 3/8"	1/8", 3/8"	1/8", 3/8"
Exhaust type	Front	Front	Front	Rear	Rear	Rear
Lever type	Safety lever	Safety lever	Safety lever	Safety lever	Safety lever	Safety lever

### Recommended Consumables

#### Tungsten Carbide Burs

15, 20 & 25mm  
9/16", 13/16" & 1"

#### Abrasives

Mounted points,  
flap wheels, bands



Accessories	Part Number
Spanner	25561210
Spanner	25561110
Hose	17712120

### FEATURES & BENEFITS

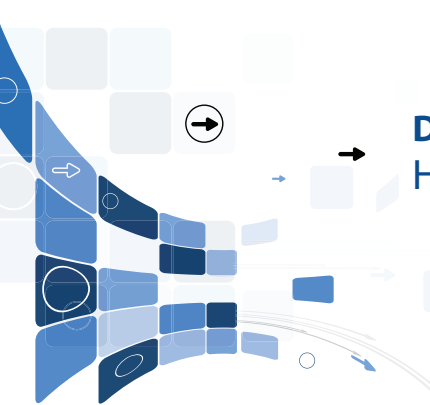
- Spider coupling-Improved transmission strength
- Motor-more power less consumption
- Throttle valve for smoother start up action
- Ergonomically designed lever construction
- Governor design offering a range of speeds



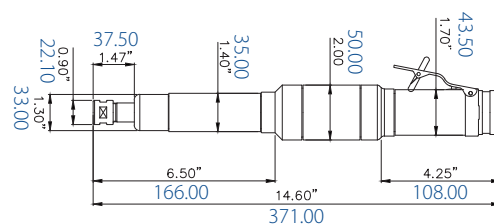
### Ordering Information

For more information and / or to place an order, please contact  
ATA Customer Service Internationally +353 (0) 49 432 6178 or  
by email [sales@atagroup.ie](mailto:sales@atagroup.ie) or the UK +44 (0) 1530 261 145,  
email [sales@atagroupuk.com](mailto:sales@atagroupuk.com)



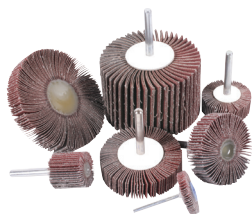


## DIE GRINDER Horizontal Die Grinder - SHG18LR



Model	SHG18LR
Speed (rpm)	18,000
Power (hp)	1.50
Power (Watt)	1100
Weight (Kg)	2.50
Weight (lb)	5.50
Air consumption (m3/min)	1.13
Air consumption (cfm)	39.90
Noise level (db.(A))	70
Standard Collet Size Metric	6
Collet Options - Metric	3,8,10
Standard Collet Size - Imperial	1/4"
Collet Options - Imperial	1/8", 3/8"
Exhaust type	Rear
Lever type	Safety lever

Recommended Consumables	
Tungsten Carbide Burs	15 & 20mm - 9/16" & 13/16"
Abrasives	Flap wheel/Large abrasives wheels



Accessories	Part Number
Spanner	25561210
Spanner	25561110
Hose	17700320
Over hose	17700520
Hose Set	17711020



### Ordering Information

For more information and / or to place an order, please contact  
ATA Customer Service Internationally +353 (0) 49 432 6178 or  
by email [sales@atagroup.ie](mailto:sales@atagroup.ie) or the UK +44 (0) 1530 261 145,  
email [sales@atagroupuk.com](mailto:sales@atagroupuk.com)



### FEATURES & BENEFITS

- High power/weight ratio compared with high cycle grinders
- Double handed operation for improved control
- Robust for heavy duty applications
- Suitable for use with 15mm tungsten carbide burs
- Ergo sleeve fitted for operator comfort

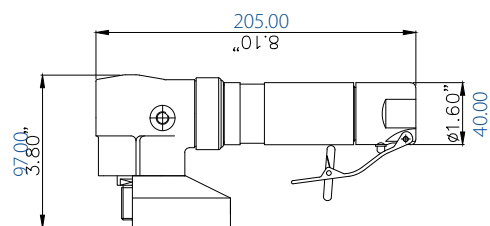




**GRINDER**



## GRINDER Medium Angle Grinder - RA13 Line



Model	RA13-100	RA13-115
Speed (rpm)	13,000	13,000
Power (hp)	1.10	1.10
Power (Watt)	820	820
Weight (Kg)	1.60	1.60
Weight (lb)	3.52	3.52
Air consumption (m3/min)	0.92	0.92
Air consumption (cfm)	32.49	32.49
Noise level (db.(A))	73	73
Exhaust type	Front	Front
Lever type	Safety lever	Safety lever

Recommended Consumables	
Abrasives	Grinding discs, Flap discs and Fiber discs

### FEATURES & BENEFITS

- One or two handed operation possible
- Suitable for medium sanding applications
- Available as a sander or grinder.
- Excellent power / weight ratio
- Ergo sleeve fitted for operator comfort



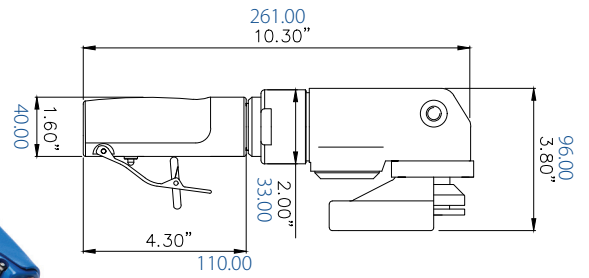
Accessories	Part Number
Pin Key (RA13-100-IMP)	25566210
Pin Key (RA13-115-IMP)	25541910
Spanner	25561110
Hose	17731420
Over hose	17794520
Hose Set	17711020



### Ordering Information

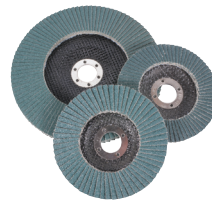
For more information and / or to place an order, please contact  
ATA Customer Service Internationally +353 (0) 49 432 6178 or  
by email [sales@atagroup.ie](mailto:sales@atagroup.ie) or the UK +44 (0) 1530 261 145,  
email [sales@atagroupuk.com](mailto:sales@atagroupuk.com)

## GRINDER Medium Angle Grinder - RA14 Line



Model	RA14-100-DS1	RA14-115-DS1	RA14-125-DS1	RA14-100-PA4	RA14-115-PA4	RA14-125-PA4
Speed (rpm)	15,000	13,000	12,000	15,000	13,000	12,000
Power (hp)	1.50	1.50	1.50	1.50	1.50	1.50
Power (Watt)	1100	1100	1100	1100	1100	1100
Weight (Kg)	1.90	1.90	1.90	1.90	1.90	1.90
Weight (lb)	4.18	4.18	4.18	4.18	4.18	4.18
Air consumption (m3/min)	1.13	1.13	1.13	1.13	1.13	1.13
Air consumption (cfm)	39.90	39.90	39.90	39.90	39.90	39.90
Noise level (db.(A))	79	79	79	78	77	75
Exhaust type	Diffuser	Diffuser	Diffuser	Piston	Piston	Piston
Lever type	Safety lever	Safety lever	Safety lever	Safety lever	Safety lever	Safety lever

Recommended Consumables	
Abrasives	Grinding discs, Flap discs and Fiber disc



Accessories	Part Number
Pin Key	25566210
Spanner	25561210
Allen Key	10911800
Hose	17733820
Over hose	17700520

### FEATURES & BENEFITS

- High speed - fine finish
- Small diameter facilitates precise control
- Minimal tools required for stripping
- Ergo sleeve fitted for operator comfort

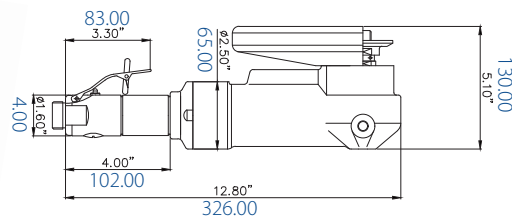


### Ordering Information

For more information and / or to place an order, please contact ATA Customer Service Internationally +353 (0) 49 432 6178 or by email [sales@atagroup.ie](mailto:sales@atagroup.ie) or the UK +44 (0) 1530 261 145, email [sales@atagroupuk.com](mailto:sales@atagroupuk.com)

## GRINDER

### Large Angle Grinder - RAXAVH Line



Model	RA8AVH	RA6AVH
Speed (rpm)	8,500	6,500
Power (hp)	2.00	2.00
Power (Watt)	1500	1500
Weight (Kg)	3.50	3.50
Weight (lb)	7.70	7.70
Air consumption (m3/min)	1.90	1.90
Air consumption (cfm)	67.09	67.09
Noise level (db.(A))	79	79
Exhaust type	Front	Front
Lever type	Safety lever	Safety lever
Recommended Consumables		
Abrasives	Grinding discs and Flap discs	

#### FEATURES & BENEFITS

- Powerful motor for heavy grinding
- Powerful and fast to ensure fast stock removal
- Robust and reliable design for arduous applications
- Anti-vibration side handle
- Ergo sleeve fitted for operator comfort



Accessories	Part Number
Spanner	25561210
Pin Key	25541910
Allen Key	10911800
Hose	17731220

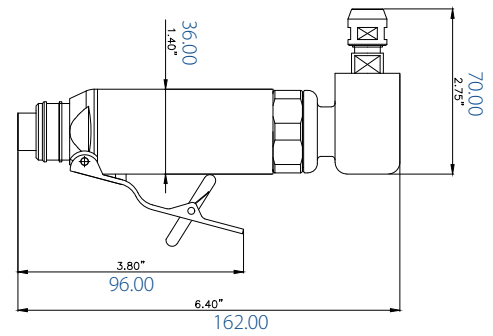


#### Ordering Information

For more information and / or to place an order, please contact  
ATA Customer Service Internationally +353 (0) 49 432 6178 or  
by email [sales@atagroup.ie](mailto:sales@atagroup.ie) or the UK +44 (0) 1530 261 145,  
email [sales@atagroupuk.com](mailto:sales@atagroupuk.com)



## SANDERS Small Angle Sander - RA20-10 Line



Model	RA20LR	RA10LR	RA20LRX -75	RA20LR -125	RA10LRX -75	RA10LRX -125
Speed (rpm)	20,000	12,000	20,000	20,000	12,000	12,000
Power (hp)	0.40	0.40	0.40	0.40	0.40	0.40
Power (Watt)	300	300	300	300	300	300
Weight (Kg)	0.52	0.52	0.65	0.70	0.65	0.70
Weight (lb)	1.14	1.14	1.43	1.54	1.14	1.14
Air consumption (m3/min)	0.57	0.57	0.57	0.57	0.57	0.57
Air consumption (cfm)	20.13	20.13	20.13	20.13	20.13	20.13
Noise level (db.(A))	74	71	74	74	71	71
Standard collet (mm)	6	6	6	6	6	6
Collet options (mm)	3	3	3	3	3	3
Standard collet (")	1/4"	1/4"	1/4"	1/4"	1/4"	1/4"
Collet options (")	1/8"	1/8"	1/8"	1/8"	1/8"	1/8"
Exhaust type	Rear	Rear	Rear	Rear	Rear	Rear
Lever type	Safety lever	Safety lever	Safety lever	Safety lever	Safety lever	Safety lever

### FEATURES & BENEFITS FOR LR MODELS

- Ergonomic design for operator comfort
- Excellent power/weight ratio
- Collet & direct attachment facilitates use with burs & abrasive discs
- Suitable for use with 50mm sanding discs

### FEATURES & BENEFITS FOR LRX-75 MODELS

- Ergonomic design for operator comfort
- Excellent power/weight ratio
- Needle roller bearing in spindle housing for improved spindle support
- 75mm extended spindle for sanding in difficult to access areas
- Removable thread cover when not using extended spindles

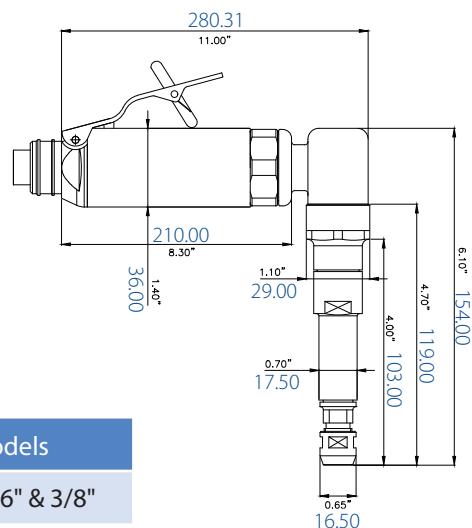


### Ordering Information

For more information and / or to place an order, please contact  
ATA Customer Service Internationally +353 (0) 49 432 6178 or  
by email [sales@atagroup.ie](mailto:sales@atagroup.ie) or the UK +44 (0) 1530 261 145,  
email [sales@atagroupuk.com](mailto:sales@atagroupuk.com)

## SANDERS

### Small Angle Sander - RA20-10 Line *Contd.*



Recommended Consumables	RA20 Models	RA10 Models
Tungsten Carbide Burs	6 & 8mm - 1/4" & 5/16"	8 & 10mm - 5/16" & 3/8"
Abrasives	Sanding discs/QCD, Fan grinders, Mounted points	Sanding discs/QCD, Fan grinders, Mounted points

Accessories	Part Number
Spanner	25561110
Spanner	25546210
Hose	17712120
Over hose	17794520
Hose Set	17711420



#### FEATURES & BENEFITS FOR LRX-125 MODELS

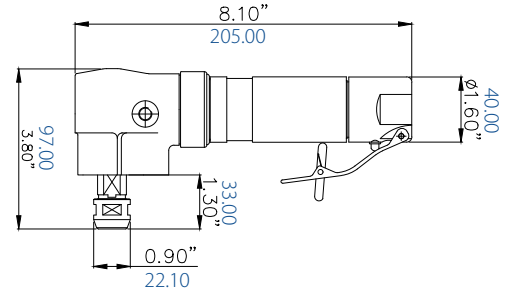
- Ergonomically designed/compact
- Excellent power/weight Ratio
- Needle roller bearing in spindle housing for improved spindle support
- 125mm extended spindle for sanding in difficult to access areas
- Removable thread cover when not using extended spindles



#### Ordering Information

For more information and / or to place an order, please contact ATA Customer Service Internationally +353 (0) 49 432 6178 or by email [sales@atagroup.ie](mailto:sales@atagroup.ie) or the UK +44 (0) 1530 261 145, email [sales@atagroupuk.com](mailto:sales@atagroupuk.com)

## SANDER Medium Angle Sander - RA13C



Model	RA13C
Speed (rpm)	13,000
Power (hp)	1.10
Power (Watt)	820
Weight (Kg)	1.50
Weight (lb)	3.30
Air consumption (m3/min)	0.92
Air consumption (cfm)	32.49
Noise level (db.(A))	72
Standard Collet Size Metric	6
Collet Options - Metric	3,8,10
Standard Collet Size - Imperial	1/4"
Collet Options - Imperial	1/8", 3/8"
Exhaust type	Front
Lever type	Safety lever

Recommended Consumables	
Tungsten Carbide Burs	12 & 15mm - 1/2" & 9/16"

Abrasives

Fan grinders, Sanding discs, Mounted points



Accessories	Part Number
Spanner	25561210
Spanner	25561110
Hose	17731420
Over hose	17794520
Hose Set	17711020

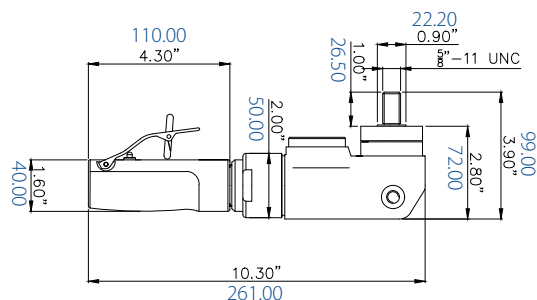


### Ordering Information

For more information and / or to place an order, please contact  
ATA Customer Service Internationally +353 (0) 49 432 6178 or  
by email [sales@atagroup.ie](mailto:sales@atagroup.ie) or the UK +44 (0) 1530 261 145,  
email [sales@atagroupuk.com](mailto:sales@atagroupuk.com)



## SANDER Medium Angle Sander - RA14S-125PA5



Model	RA14S-125PA5
Speed (rpm)	9,000
Power (hp)	1.50
Power (Watt)	1100
Weight (Kg)	1.90
Weight (lb)	4.19
Air consumption (m3/min)	1.13
Air consumption (cfm)	39.90
Noise level (db.(A))	75
Exhaust type	Piston
Lever type	Safety lever
Recommended Consumables	
Abrasives	Sanding discs

### FEATURES & BENEFITS

- Modified gear set for increased torque during grinding
- Durable/robust design
- Auto-balancer & antivibration side handle to reduce anti-vibration
- Piston type exhaust for reduced noise



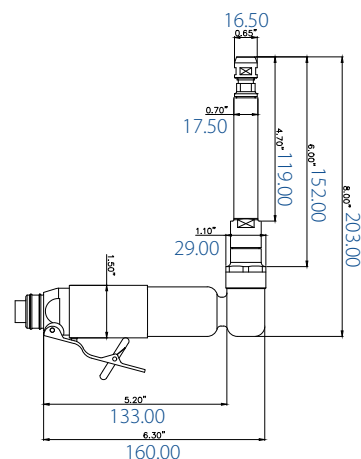
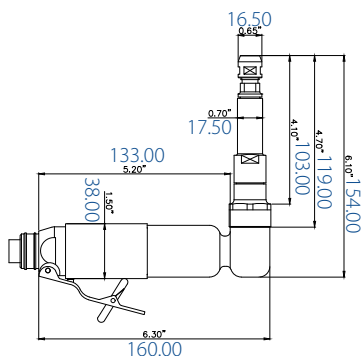
Accessories	Part Number
Spanner	25541910
Hose	17733820
Over hose	17700520
Hose set	17700520



### Ordering Information

For more information and / or to place an order, please contact ATA Customer Service Internationally +353 (0) 49 432 6178 or by email [sales@atagroup.ie](mailto:sales@atagroup.ie) or the UK +44 (0) 1530 261 145, email [sales@atagroupuk.com](mailto:sales@atagroupuk.com)

## SANDER Low Speed Sander - RAB4LR Line



Model	RAB4LR	RAB4LR-75	RAB4LR-125
Speed (rpm)	3500	3500	3500
Power (hp)	0.40	0.40	0.40
Power (Watt)	300	300	300
Weight (Kg)	0.69	0.70	0.71
Weight (lb)	1.52	1.52	1.52
Air consumption (m3/min)	0.57	0.57	0.57
Air consumption (cfm)	20.13	20.13	20.13
Noise level (db.(A))	67	67	67
Standard collet (mm)	6	6	6
Collet options (mm)	3	3	3
Standard collet (")	1/4"	1/4"	1/4"
Collet options (")	1/8"	1/8"	1/8"
Exhaust type	Rear	Rear	Rear
Lever type	Lever	Lever	Lever

### FEATURES & BENEFITS FOR LR MODELS

- Low speed/high torque thanks to planetary gears, ideal for titanium applications
- Direct spindle attachment can be fitted for reduced vibration
- Collet options available
- Ergo sleeve fitted for operator comfort

### FEATURES & BENEFITS FOR LRX-75 MODELS

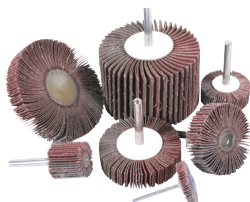
- Same as LR model
- 75mm extended spindle for sanding in difficult to access areas

### FEATURES & BENEFITS FOR LRX-125 MODELS

- Same as LR model
- 125mm extended spindle for sanding in difficult to access areas

Recommended Consumables	
Carbide Burs	

#### Abrasives



#### Fan grinders, QCD and Mounted points

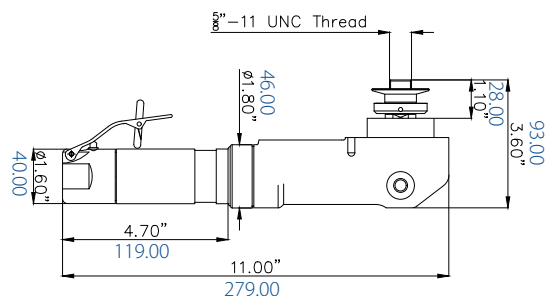
Accessories	Part Number
Spanner	25561110
Spanner	25546210
Hose	17712120
Over hose	17794520
Hose Set	17711420



## Ordering Information

For more information and / or to place an order, please contact  
ATA Customer Service Internationally +353 (0) 49 432 6178 or  
by email [sales@atagroup.ie](mailto:sales@atagroup.ie) or the UK +44 (0) 1530 261 145,  
email [sales@atagroupuk.com](mailto:sales@atagroupuk.com)

## SANDER Low Speed Sander - RA5/2 LINE

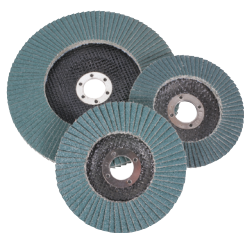


Model	RA5	RA2
Speed (rpm)	5500	2700
Power (hp)	1.10	1.10
Power (Watt)	820	820
Weight (Kg)	2.75	2.75
Weight (lb)	6.05	6.05
Air consumption (m3/min)	0.92	0.92
Air consumption (cfm)	32.49	32.49
Noise level (db.(A))	69	68
Exhaust type	Front	Front
Lever type	Safety lever	Safety lever

Recommended Consumables	
Abrasives	Sanding discs and surface conditioning discs

### FEATURES & BENEFITS

- Low speed to suit many sanding applications
- Suitable for use with 7" fibre discs for light sanding
- Excellent power/weight ratio
- Ergo sleeve fitted for operator comfort



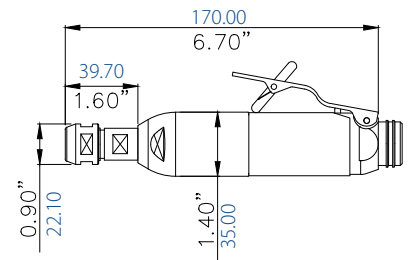
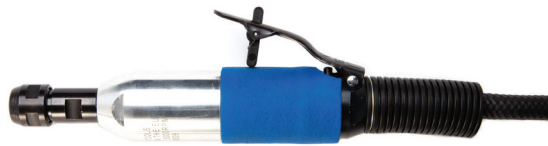
Accessories	Part Number
Pin Key	25541910
Spanner	25561210
Hose	17731420
Over hose	17794520
Hose Set	17711020



### Ordering Information

For more information and / or to place an order, please contact ATA Customer Service Internationally +353 (0) 49 432 6178 or by email [sales@atagroup.ie](mailto:sales@atagroup.ie) or the UK +44 (0) 1530 261 145, email [sales@atagroupuk.com](mailto:sales@atagroupuk.com)

## SANDER Low Speed Polisher - SBxLR Line

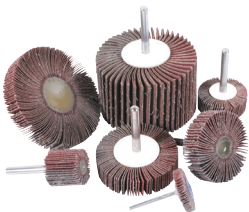


Model	SB10LR	SB5LR
Speed (rpm)	9000	5000
Power (hp)	0.40	0.40
Power (Watt)	300	300
Weight (Kg)	0.60	0.60
Weight (lb)	1.32	1.32
Air consumption (m3/min)	0.57	0.57
Air consumption (cfm)	20.13	20.13
Noise level (db(A))	68	68
Standard collet (mm)	6	6
Collet options (mm)	3,8,10	3,8,10
Standard collet (")	1/4"	1/4"
Collet options (")	1/8", 3/8"	1/8", 3/8"
Exhaust type	Rear	Rear
Lever type	Safety lever	Safety lever

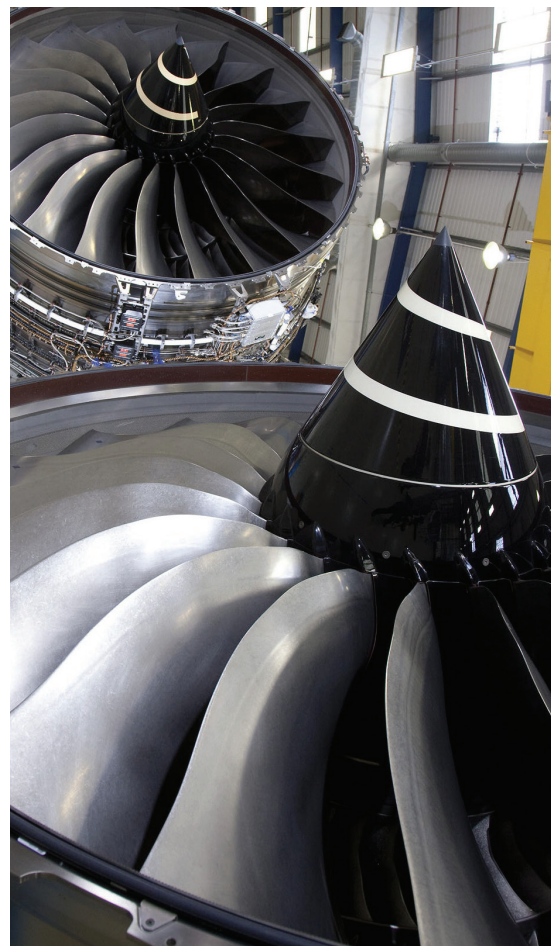
### FEATURES & BENEFITS

- Low speed/high torque due to planetary gears, ideal for titanium applications
- Collet options to accommodate range of shank mounted consumables
- Excellent power/weight ratio
- Ergo sleeve fitted for operator comfort

Recommended Consumables	
Carbide Burs	12 & 15mm - 1/2" & 9/16"
Abrasives	Fan grinders, QCD, Mounted points, Surface conditioning and sanding discs



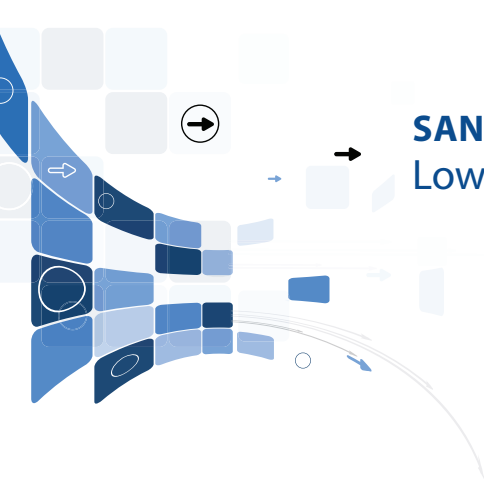
Accessories	Part Number
Spanner	25561110
Spanner	25561210
Hose	17712120
Over hose	17794520
Hose Set	17711420



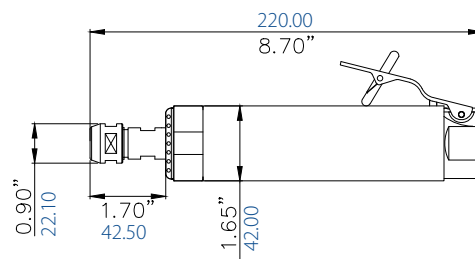
### Ordering Information



For more information and / or to place an order, please contact  
ATA Customer Service Internationally +353 (0) 49 432 6178 or  
by email [sales@atagroup.ie](mailto:sales@atagroup.ie) or the UK +44 (0) 1530 261 145,  
email [sales@atagroupuk.com](mailto:sales@atagroupuk.com)



## SANDER Low Speed Polisher - S5L

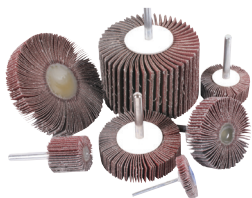


Model	S5L
Speed (rpm)	5000
Power (hp)	0.85
Power (Watt)	630
Weight (Kg)	1.30
Weight (lb)	2.86
Air consumption (m3/min)	0.85
Air consumption (cfm)	30.01
Noise level (db.(A))	66
Standard Collet Size Metric	6
Collet Options - Metric	3,8,10
Standard Collet Size - Imperial	1/4"
Collet Options - Imperial	1/8", 3/8"
Exhaust type	Front
Lever type	Safety lever

Recommended Consumables	
Carbide Burs	

Abrasives

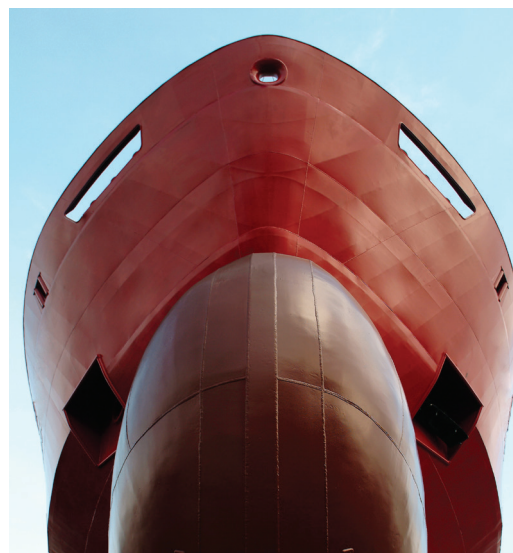
Fan grinders, QCD, Mounted points,  
Surface conditioning and sanding discs



Accessories	Part Number
Spanner	25561110
Spanner	25561210
Hose	17731420
Over hose	17794520
Hose Set	17711020

### FEATURES & BENEFITS

- Low speed/high torque due to planetary gears
- Suitable for a wide range of sanding applications
- Collet options to accommodate range of shank mounted consumables
- Double handed operation for improved control
- Ergo sleeve fitted for operator comfort

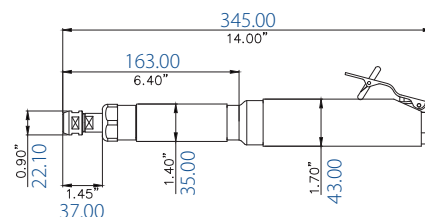


### Ordering Information

For more information and / or to place an order, please contact  
ATA Customer Service Internationally +353 (0) 49 432 6178 or  
by email [sales@atagroup.ie](mailto:sales@atagroup.ie) or the UK +44 (0) 1530 261 145,  
email [sales@atagroupuk.com](mailto:sales@atagroupuk.com)



## SANDER Low Speed Polisher - STXxL



Model	STX5L	STX3L
Speed (rpm)	5000	3000
Power (hp)	0.85	0.85
Power (Watt)	630	630
Weight (Kg)	1.60	1.60
Weight (lb)	3.52	3.52
Air consumption (m3/min)	0.85	0.85
Air consumption (cfm)	30.01	30.01
Noise level (db.(A))	66	64
Standard collet (mm)	6	6
Collet options (mm)	3,8,10	3,8,10
Standard collet (")	1/4"	1/4"
Collet options (")	1/8", 3/8"	1/8", 3/8"
Exhaust type	Front	Front
Lever type	Safety lever	Safety lever

### FEATURES & BENEFITS

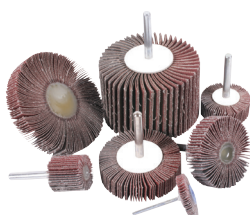
- Low speed/high torque due to planetary gears
- Suitable for a wide range of sanding applications
- Collet options to accommodate range of shank mounted consumables
- Double handed operation for improved control
- Ergo sleeve fitted for operator comfort



Recommended Consumables	
Carbide Burs	

### Abrasives

Fan grinders, QCD, Mounted points, Surface conditioning and sanding discs



Accessories	Part Number
Spanner	25561110
Spanner	25561210
Hose	17731420
Over hose	17794520
Hose Set	17711020



### Ordering Information

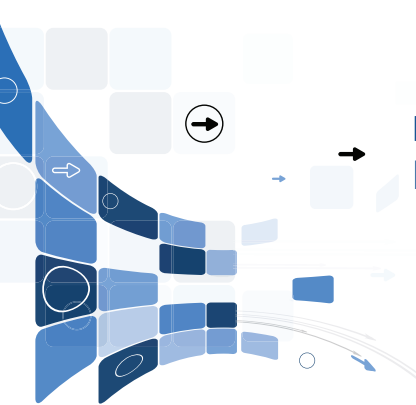


For more information and / or to place an order, please contact  
ATA Customer Service Internationally +353 (0) 49 432 6178 or  
by email [sales@atagroup.ie](mailto:sales@atagroup.ie) or the UK +44 (0) 1530 261 145,  
email [sales@atagroupuk.com](mailto:sales@atagroupuk.com)

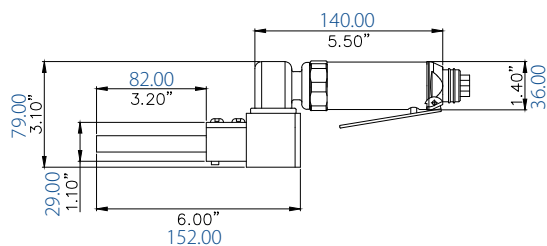


**BELT SANDERS**





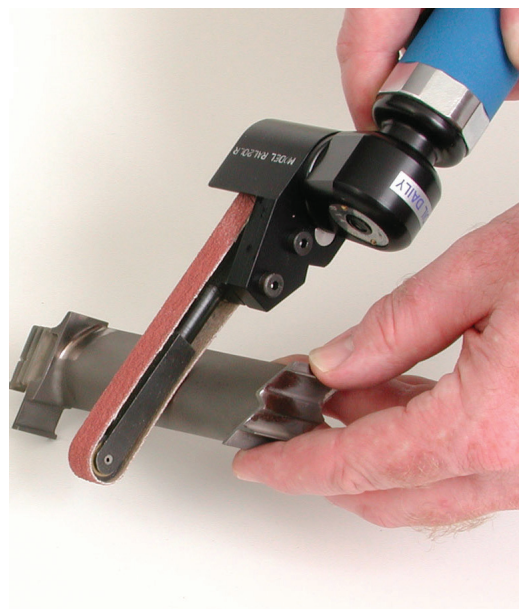
## BELT SANDER RAL20L



Model	RAL20L
Speed (rpm)	20000
Power (hp)	0.40
Power (Watt)	300
Weight (Kg)	0.85
Weight (lb)	1.87
Air consumption (m3/min)	0.57
Air consumption (cfm)	20.13
Noise level (db.(A))	74
Exhaust type	Rear
Lever type	Safety lever
Recommended Consumables	
Abrasives	Abrasives and surface conditioning belts

### FEATURES & BENEFITS

- Compact design for light sanding applications
- Multiple arms to suit a range of belts
- Belt can be easily replaced
- Ergo sleeve fitted for operator comfort



Accessories	Part Number
Allen Key	10900100
Allen Key	10903100
Hose	17731420
Over hose	17794520
Hose Set	17711020

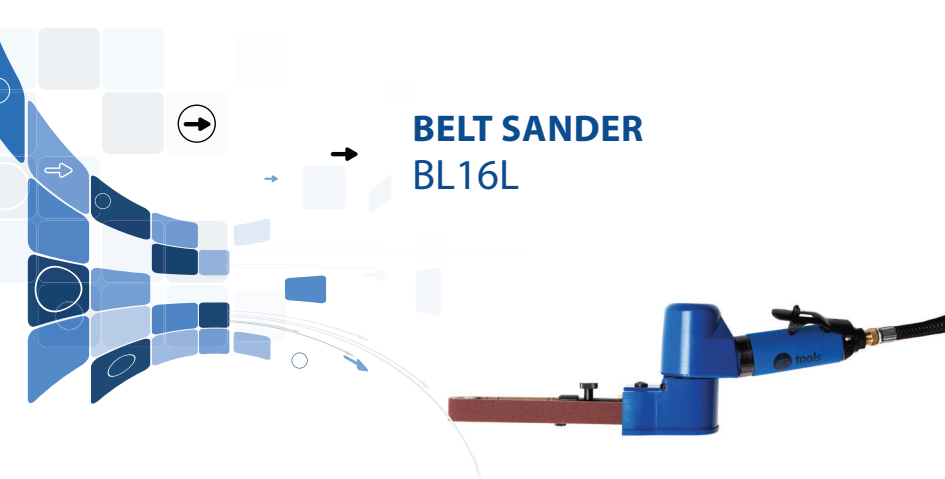


Please refer to accessories page 36 for contact wheels arms and platen

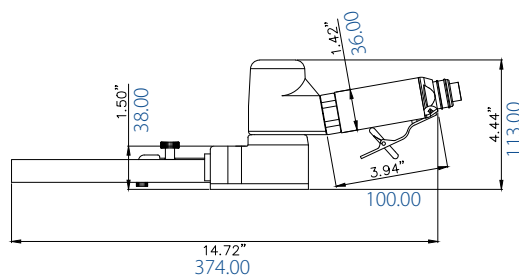


### Ordering Information

For more information and / or to place an order, please contact ATA Customer Service Internationally +353 (0) 49 432 6178 or by email [sales@atagroup.ie](mailto:sales@atagroup.ie) or the UK +44 (0) 1530 261 145, email [sales@atagroupuk.com](mailto:sales@atagroupuk.com)



## BELT SANDER BL16L



Model	BL16L
Speed (rpm)	16000
Power (hp)	0.50
Power (Watt)	370
Weight (Kg)	1.30
Weight (lb)	2.86
Air consumption (m3/min)	0.60
Air consumption (cfm)	21.19
Noise level (db.(A))	73
Exhaust type	Front
Lever type	Safety lever

Recommended Consumables	
Abrasives	Abrasives and surface conditioning belts

### FEATURES & BENEFITS

- Compact design for light sanding applications
- Multiple arms to suit a range of belts
- Belt can be easily replaced
- Ergo sleeve fitted for operator comfort



Accessories	Part Number
Allen key	10911800
Allen key	10903100
Hose	17731420
Over hose	17794520
Hose set	17711020



Please refer to accessories page 36 for contact wheels arms and platen



### Ordering Information

For more information and / or to place an order, please contact ATA Customer Service Internationally +353 (0) 49 432 6178 or by email [sales@atagroup.ie](mailto:sales@atagroup.ie) or the UK +44 (0) 1530 261 145, email [sales@atagroupuk.com](mailto:sales@atagroupuk.com)



**ACCESSORIES**





# ACCESSORIES RA14



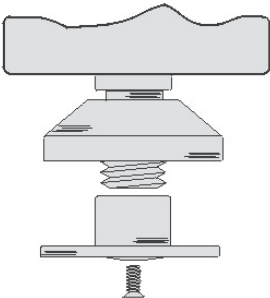
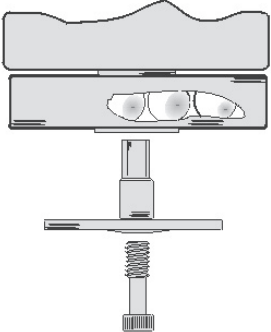
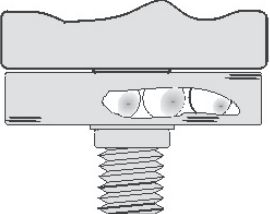
Type S Part No. 14079220



Type A Part No. 14075610

Type	Description	Part number	Picture
S	Solid handle rugged design	140-756-20	140-756-20
A	Rugged all rubber handle. Comfortable ergonomic design with rubber isolation buffer for reduced vibration.	140-792-10	140-792-10

## Spindle options for disc grinders

 <p><b>TYPE 1-22</b>  <b>TYPE 1-16</b>  Standard threaded flange with safety screw.  <b>TYPE 1-22</b> for wheels with 22mm (7/8") center hole.  <b>TYPE 1-16</b> for wheels with 16mm (5/8") center hole.  <b>Note:</b> Type 1-22 can be converted to Type 3-5/8 by removing flanges and adding spacer part code 233-105-10</p>	 <p><b>TYPE 4</b>  Dynamic autobalance system counteracts wheel imbalance. Low vibration levels increase wheel life and reduce operator fatigue. Quick fit locking flange for easy wheel change - use only common hex wrench. Available only for wheels with 22mm (7/8") center hole.</p>	 <p><b>TYPE 5</b>  Dynamic autobalance system counteracts wheel imbalance. Low vibration levels increase wheel life and reduce operator fatigue. Threaded Spindle for threaded center hubbed wheels or other thread on consumables such as wire brushes. Available only with 5/8-11 thread.</p>
--	--	---

**Exhaust options**  
P - Piston type exhaust  
D - Diffuser type exhaust



## Ordering Information

For more information and / or to place an order, please contact  
ATA Customer Service Internationally +353 (0) 49 432 6178 or  
by email [sales@atagroup.ie](mailto:sales@atagroup.ie) or the UK +44 (0) 1530 261 145,  
email [sales@atagroupuk.com](mailto:sales@atagroupuk.com)

## ACCESSORIES

### Belt Sanders

#### Standard Contact Wheel Arm for RAL20L

Material	Diameter	Diameter	Belt dimensions	Belt dimensions	Part number
Rubber wheel	16mm	5/8"	305mm x 12mm	12" x 1/2"	515-133-20

#### Optional Contact Wheel Arms for RAL20L

Material	Diameter	Diameter	Belt dimensions	Belt dimensions	Part number
Rubber wheel	16mm	5/8"	457mm x 12mm	18"-19" x 1/2"	515-134-20
Steel wheel	8mm	5/16"	457mm x 12mm	18" x 1/2"	515-136-20
Steel wheel	8mm	5/16"	305mm x 12mm	12" x 1/2"	515-135-20
Steel wheel	8mm	5/16"	305mm x 6mm	12" x 1/4"	515-137-20
Steel wheel	8mm	5/16"	457mm x 6mm	18" x 1/4"	515-138-20
Rubber wheel	16mm	5/8"	330mm x 12mm	13" x 1/2"	515-100-20
Rubber wheel	8mm	5/16"	305mm x 12mm	12" x 1/2"	515-071-20

*All arms are supplied with soft platen fitted*

#### Standard Contact Wheel Arm for BL16L

Material	Diameter	Diameter	Belt dimensions	Belt dimensions	Part number
Rubber wheel*	25mm	1"	480mm x 20mm	18"-19" x 3/4"	516-015-20

#### Optional Contact Wheel Arms for BL16L

Material	Diameter	Diameter	Belt dimensions	Belt dimensions	Part number
Rubber wheel*	25mm	1"	480mm x 25mm	18"-19" x 1"	516-029-20
Rubber wheel*	25mm	1"	457mm x 20mm	18" x 3/4"	516-027-20
Rubber wheel*	14mm	9/16"	480mm x 20mm	18"-19" x 3/4"	516-028-20
Rubber wheel*	25mm	1"	480mm x 12mm	18"-19" x 1/2"	516-026-20
Rubber wheel**	16mm	5/8"	480mm x 12mm	18"-19" x 1/2"	516-024-20
Rubber wheel**	8mm	5/16"	610mm x 12mm	24" x 1/2"	516-025-20
Rubber wheel	8mm	5/16"	305mm x 12mm	12" x 1/2"	515-071-20

\* Please order platen separately - part number : 516-022-20

\*\* Arms supplied with platen fitted



## Ordering Information

For more information and / or to place an order, please contact  
ATA Customer Service Internationally +353 (0) 49 432 6178 or  
by email [sales@atagroup.ie](mailto:sales@atagroup.ie) or the UK +44 (0) 1530 261 145,  
email [sales@atagroupuk.com](mailto:sales@atagroupuk.com)

## ACCESSORIES



### Collets

	133-121-10	133-122-10	133-101-10	133-115-10
Type	CA	CB	CC	CD
Size	Part number	Part number	Part number	Part number
3/32"	N/A	N/A	133-103-10	133-113-10
1/8"	133-123-10	133-126-10	133-102-10	133-112-10
1/4"	133-107-10	133-116-10	N/A	N/A
3/8"	133-125-10	N/A	N/A	N/A
2.34mm	N/A	N/A	133-103-10	133-113-10
3.0mm	133-123-10	133-126-10	133-101-10	133-115-10
6.0mm	133-121-10	133-122-10	N/A	N/A
8.0mm	133-124-10	N/A	N/A	N/A
10.0mm	133-106-10	N/A	N/A	N/A

Special size collets are available upon request. Please contact your customer service representative.

### Hoses

Tool Inlet Thread	Hose assemble thread details	Inlet hose	Inlet hose dimensions	Over hose	Over hose dimensions	Hose set	Hose clip	Tool example
M8 Female	M8 Male x 1/4" Male	177-010-20	2 metres x Ø6mm	177-106-20	1 metre x Ø16mm	177-012-20	277-102-10	SP75R-IMP
1/4" Female	1/4" Male x 1/4" male	177-314-20	3 metres x Ø8mm	177-945-20	1 metre x Ø22mm	177-114-20	277-104-10	SD37LR-IMP
1/2" Female	1/4" Male x 3/8" Male	177-338-20	3 metres x Ø12mm	177-005-20	1 metre x Ø50mm	N/A	166-110-00	RA14-125PA4-IMP SHG18LR-IMP
3/4" Female	3/4" Female x 3/4" Female	177-312-20	3 metres x Ø16mm	N/A	N/A	N/A	N/A	RA6AVH-IMP
1/4" Female	1/4" Male x 1/4" male	177-121-20	2 metres x Ø8mm	177-950-20	1 metre x Ø34mm	177-053-20	N/A	SMD25LR-CA-IMP

Part No. 17731420

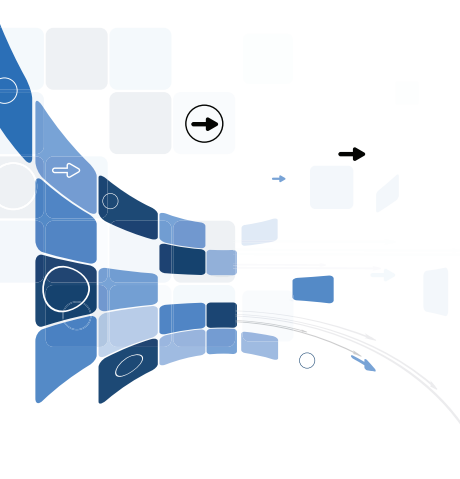


Part No. 17731220



Part No. 17701020





Part No. 140-650-20



Part No. 140-719-20



Part No. 140-651-20

## Levers

Type	Associated tools	Part number
Toggle lever	Fits all models except models covered by part 140-651-20	140-650-20
Slide lever	Fits all models except RA14, RA10/20, RAB4LR, SB5LR and SD range	140-719-20
Toggle lever	Fits all SM, SMD and SMX models	140-651-20

## Swivel Connector

ATA Swivel connectors are available for all tools with 1/4" inlet thread.

The swivel connector makes it easier to work in awkward areas and helps to reduce operator strain.

Connectors have a 25 degree bending angle and 360 degree swivel with no pressure loss.

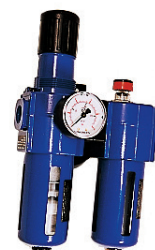
They have a very smooth operation and are trouble free.

1/4 Female x 1/4 Male Swivel Connector. Part No: 166-860-00

## Vitalizer Unit

The ATA vitalizer units remove moisture and harmful solids from the air stream and create an airborne 'micro fog' of oil which lubricates your ATA air motor, maintaining performance and ensuring long service life.

Part number	Type	Connection Thread	SCFM	CU.M/min
AFLRG-1/4	Automatic drain filter with micro fog lubricator and mounting bracket	1/4"	40	1.2
AFLRG-1/2	Automatic drain filter with regulator, gauge, micro fog lubricator and mounting bracket	1/2"	120	3.4



## Lubrication Oil

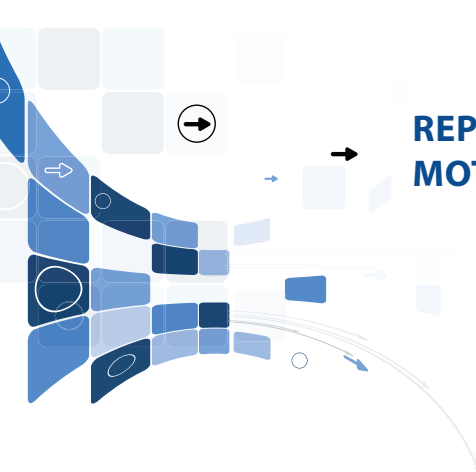
Gear Lubrication	Part number: GEARLUBE
All ATA right angle grinders and sanders are fitted with high quality gears. In order to maximise the service life of the gears it is necessary to ensure that they are properly lubricated. ATA tools utilize a unique wick system which releases the oil onto the gears when the tool is running and re-absorbs the oil when the tool is stopped. Where tools are in constant use the oil should be replenished daily through the oil screw fitted in the angle head of the tool. ATA recommends the use of ATA Gear lube or any high quality 68 cSt gear oil. Failure to lubricate gears will void all warranties.	

Motor Lubrication	Part number: ATALUBE
ATA recommends the use of ATALUBE air motor oil or other high quality 10cSt oil all vane type motors when using ATA Micro-Fog Lubricators. The oil drip rate can be set as shown in the table, remember that only 10% of the drip is actually delivered to the air supply, the remainder is returned to the main oil reservoir. Failure to properly lubricate a vane motor will void all warranties. Note: With Turbine motors such as model ST 100, lubrication oil should NOT be used.	



## Ordering Information

For more information and / or to place an order, please contact  
ATA Customer Service Internationally +353 (0) 49 432 6178 or  
by email [sales@atagroup.ie](mailto:sales@atagroup.ie) or the UK +44 (0) 1530 261 145,  
email [sales@atagroupuk.com](mailto:sales@atagroupuk.com)



## REPLACEMENT MOTORS

ATA offers a replacement motor facility on various models shown below in the table and with the symbol by the tool throughout the catalogue.

- This allows downtime to be kept to a minimum.
- Replacement motors can be easily installed with proper training and equipment provide by ATA.
- After repair with a replacement motor, the customer has the equivalent of a new tool for a fraction of the cost.
- These motors come with the same guarantee as new tools. The original motor can again be repaired, (Using ATA replacement vanes bearings etc.) in the repair departments own time, or by ATA. The motor can then be ready for the next tool service.
- The use of replacement motors prevents the customer having to carry stock of extra tools to cover for tool breakdown.

Four steps to replace the motor	
1 Loosen	micro step 1
2 Disassemble	micro step 2
3 Replace motor	micro step 3
4 Tighten	micro step 4

## STRIPPING KITS

Regular maintenance is a critically important factor when assessing on going efficiency and safety in use. With this regard ATA have a policy of low cost spare parts to enable routine, preventative maintenance to be carried out.

In addition to our in-house repair facility, we offer explosion diagrams for spare parts, stripping instructions and stripping kits are available for all tools. All tools conform with EC machinery directive and its amendments and CE marking directive 2006/42/EC



## MAINTENANCE

Regular maintenance is a crucial factor when assessing ongoing efficiency and safety of tool use. ATA's policy of pricing quality spare parts economically enables routine preventative maintenance to be carried out cost-effectively. This contributes to reduced risk of vibration related injuries and can extend the life of both tool and consumable.

At ATA we offer to assist customers' vibration management systems. A tool survey is undertaken to start the programme to assist customers' risk assessments. Vibration levels are sustained at benchmark levels throughout the tools life. Service, repair and quality checks are all part of the service offered. Tools register maintained for customers.

### Stage One

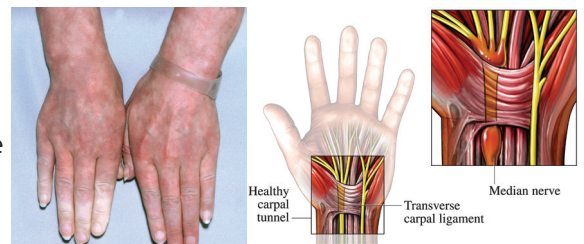
ATA personnel create a tool register where the tools are etched with an identifier. Initial tools for recall are agreed along with the frequency. A recall notice is issued to the appointed customer representative who arranges their prompt return.

### Stage Two

The tools are booked into the workshop and a job card created. Tools are inspected and serviced, any remedial work is identified and communicated by written quote, the tools are bench tested for run-out, vibration levels and speed. Information is captured both on a delivery note and on the tool record card. Tools are then returned to the customer. Our service gives customers a guarantee that tools are being maintained to the highest standard, with original parts being used throughout.

This programme provides the following benefits:

- Air tools inventory control
- Preventive and proactive maintenance
- Stable maintenance costs
- Efficiency gain thanks to correct pairing of air tool and consumable
- Delivery and collection service
- Technical support to allow continuous process optimization



### Managing Vibration

Hand Arm Vibration Syndrome (HAVS) and work related upper limb disorder (WRULD) are collective terms covering a number of potential serious injuries associated with extensive use of percussion and rotary tools, of which vibration white finger (VWF) is the most commonly recognised. It has been widely acknowledged that vibration generated from hand held power tools is the major contributory factor in such ailments and unless managed in line with current EU legislation and standards the loss of potential downtime from potential injury cannot be guaranteed.

All of our products and services have been designed and implemented recognising the related vibration risk. ATA strive to deliver the customer maximum productivity whilst ensuring minimum impact to operators health.

Continuous improvements to assist vibration and noise management such as ergo sleeves, auto-balancers, anti-vibration handles and rear exhausts have been designed to optimise efficiency in order to reduce finger on trigger time (FOTT). We aim to ensure consumables are matched to grinders for optimum performance and both are manufactured to comply with all CE regulations. Our close relationship to our sister companies producing burs and other abrasive consumables provides competitive advantage in our unparalleled product knowledge in the best tool to consumable combination offering the lowest possible vibration and highest possible productivity.



### Ordering Information

For more information and / or to place an order, please contact  
ATA Customer Service Internationally +353 (0) 49 432 6178 or  
by email [sales@atagroup.ie](mailto:sales@atagroup.ie) or the UK +44 (0) 1530 261 145,  
email [sales@atagroupuk.com](mailto:sales@atagroupuk.com)

